



know & love
timber

INNOVATIVE TIMBER SOLUTIONS RESIDENTIAL

f @portatimber @porta_timber

COMMITTED

Porta is committed to using timbers from responsibly managed forests and resources.

ABOUT PORTA

An Australian-owned and locally operated company. Porta have a rich history spanning over 70+ years proudly manufacturing and distributing a broad range of timber products using various local and imported certified timber species.

We take pride in being one of Australia's leading suppliers of decorative timber products to the home improvement, building, trade and commercial sectors.

Porta's milling and importing operations provide quality timber, moulding and design solutions to the construction industry. At Porta we leverage our expertise in timber to source and provide innovative and unique designs for internal and external applications.

Porta is committed to sustainable and renewable operations giving priority to sourcing timbers from certified sources and are backed by a team that is passionate about timber with expertise to meet your specific needs.

We are Porta.

The people who know and love timber!

As timber is a natural material, every piece is unique and will appear differently in finish, either in colour or features. Porta cannot guarantee the colour, grain, or texture of timber.



RESIDENTIAL





Product: Porta Contours Riverine in Tasmanian Oak
Design: Geoffrey James Design
Photographer: Haus Media Co.



Product: Porta Contours Cirque in Primed Pine
Build: Mann Made Building
Design: Melissa Allen
Photography: Red Berry Photography

RESIDENTIAL | PROJECT SOMERSET

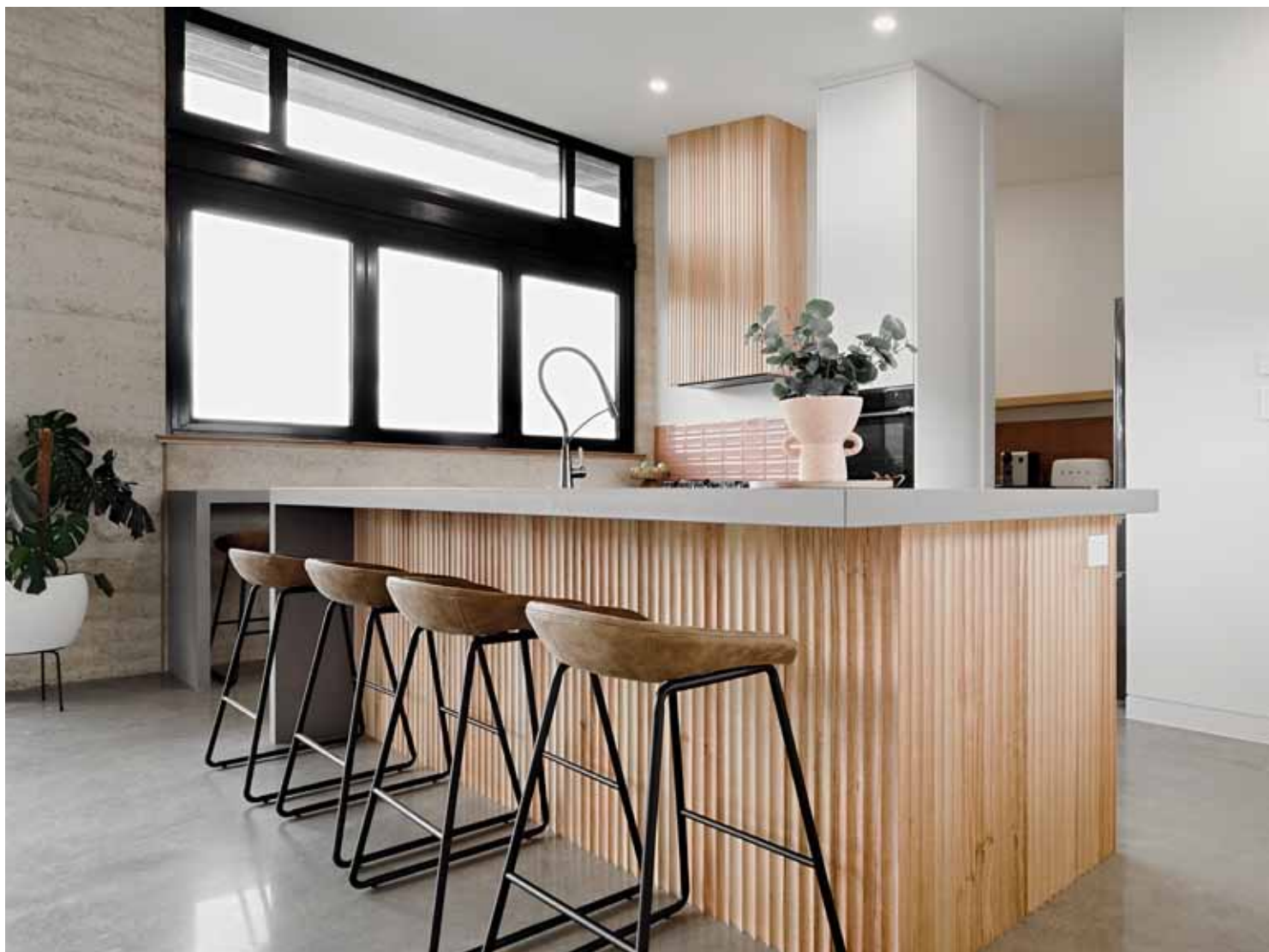


Product: Porta Contours Riverine in Tasmanian Oak
Build: TuxLux
Project Collab With: Vue Studios
Photographer: Lisa Atkinson



Product: Porta Contours Riverine in Tasmanian Oak
Photographer: Dan Iera studioidi.com.au

RESIDENTIAL | No. 364, ADELAIDE HILLS



Product: Porta Contours Cirque in Tasmanian Oak
Design: Sophie Katina
Photographer: B Captured - Commercial



Product: Porta 30 x 18mm Dressed All Round (DAR) in Tasmanian Oak
Design: Kate Anderson Design
Photographer: Phill Jackson



Product: Porta Contours Riverine
Build: Bright Black Developments
Photographer: Brock Beazley

RESIDENTIAL | EAST MELBOURNE APARTMENT REFURBISHMENT



Product: Porta Contours Valley (Black Satin Finish)
Architect: WHDA
Contractor: Jarah Constructions
Photographer: Daniel Walker

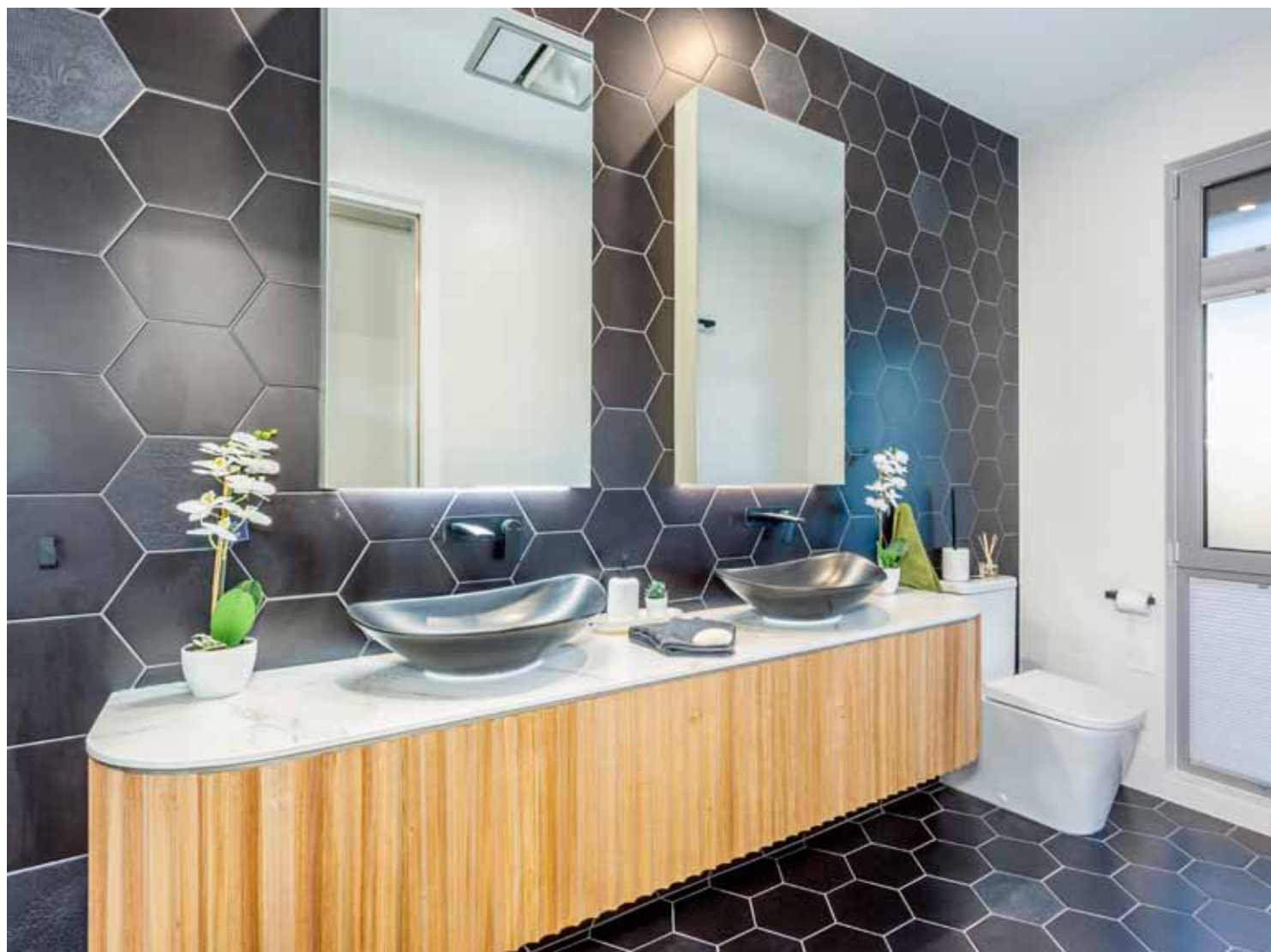
RESIDENTIAL | MODERN COASTAL BARN



Product: Porta Contours Strata in Tasmanian Oak
Design: Distinct Building Design
Build: Bakker Homes
Photographer: Atelier Photography & Muse Lifestyle Photography



Product: Porta Contours Cirque
Builder: Kalka Homes
Joiner: Larry McFarlane Cabinetry
Photographer: Anwyn Howarth



Product: Porta Contours Cirque in Tasmanian Oak
Design: MS Kitchens
Display For: Ideal Building Solutions
Photography: Agent Media

RESIDENTIAL | ZEN KITCHEN



Product: Porta Contours Riverine in Tasmanian Oak
Design/Build: 3G Homes



Product: Porta Contours Riverine in Tasmanian Oak
Build: Graya
Design: Tim Stewart Architects



Product: Porta Contours Riverine
Project: Dulux Australia
Stylist: Bree Leech
Photography: Mike Baker

RESIDENTIAL | **BLACK HANDRAIL SYSTEM**



Product: Porta Handrail System, Black



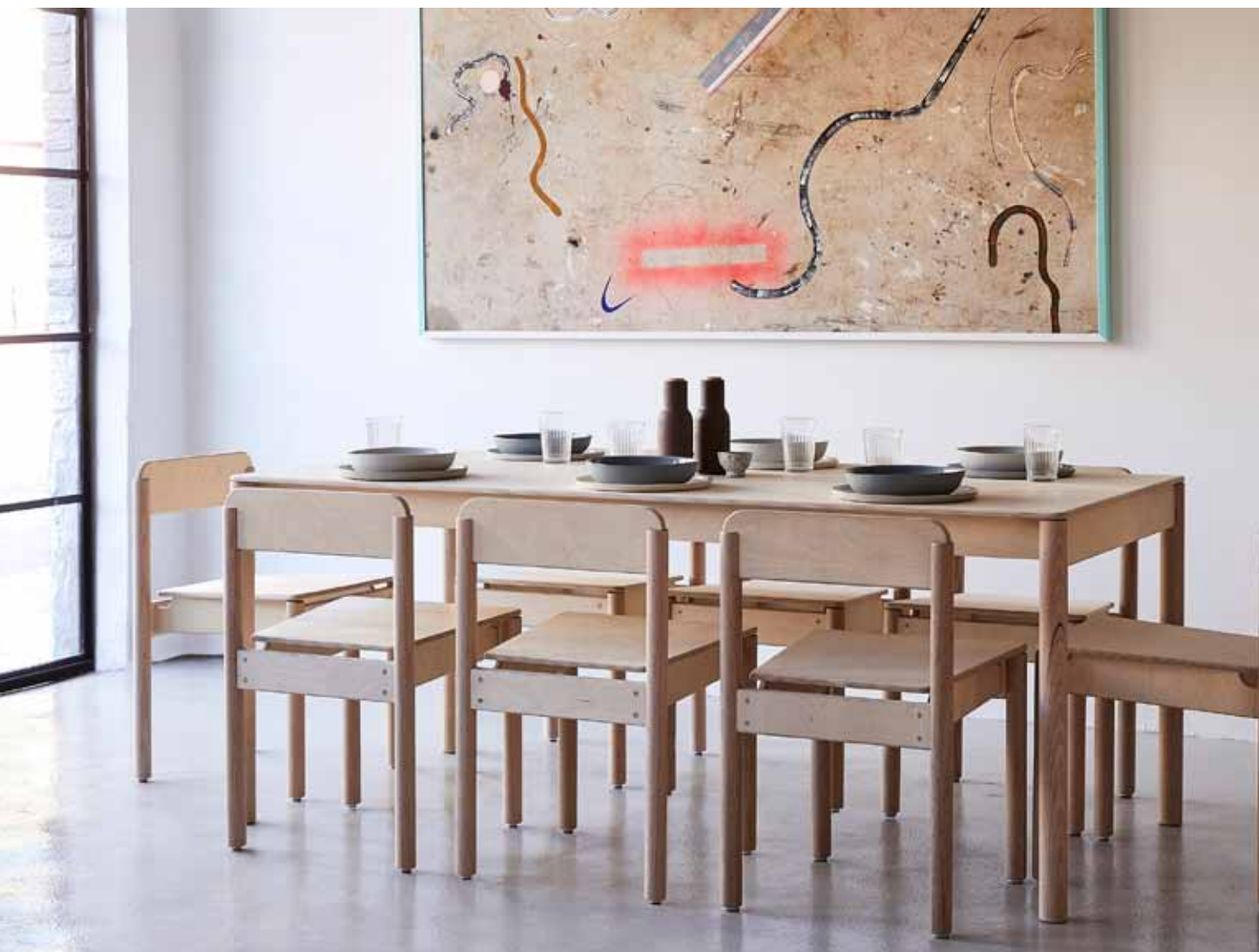
Product: Porta Handrail System, Chrome
Builder: Pocket Builders

RESIDENTIAL | OUTDOOR ENTERTAINING AREA



Product: Porta Half Round Dowel in Tasmanian Oak
Design/Build: Rumahxkita

RESIDENTIAL | SO WATT, PLONK DINING RANGE



Product: Porta Dowel in Tasmanian Oak
Maker: SoWatt
Artwork: Emma Finneran | Crockery: Mud Australia
Photography: Nic Gossage



Product: Porta 64 x 26mm Georgian Dado Rail, 40 x 18mm Panel Mould, 18 x 11mm Insert Mould, 30 x 31mm Victorian Dado Rail, 90 x 8mm Cover Strap
Design & Photography: Navy Panel and Co



Product: Porta Panel Moulds, Insert Moulds, & Architrave / Skirting
Photographer: Dan Iera studioid.com.au

RESIDENTIAL | MOODY BLUES DINING ROOM



Product: Porta 30mm Quad in Tasmanian Oak, 92 x 18mm Bevelled Architrave in Primed FJ Pine, 32mm Dowel, 190 x 30mm Dressed All Round (DAR) in General Purpose Pine
Stylist: Bree Leech
Photography: Mike Baker

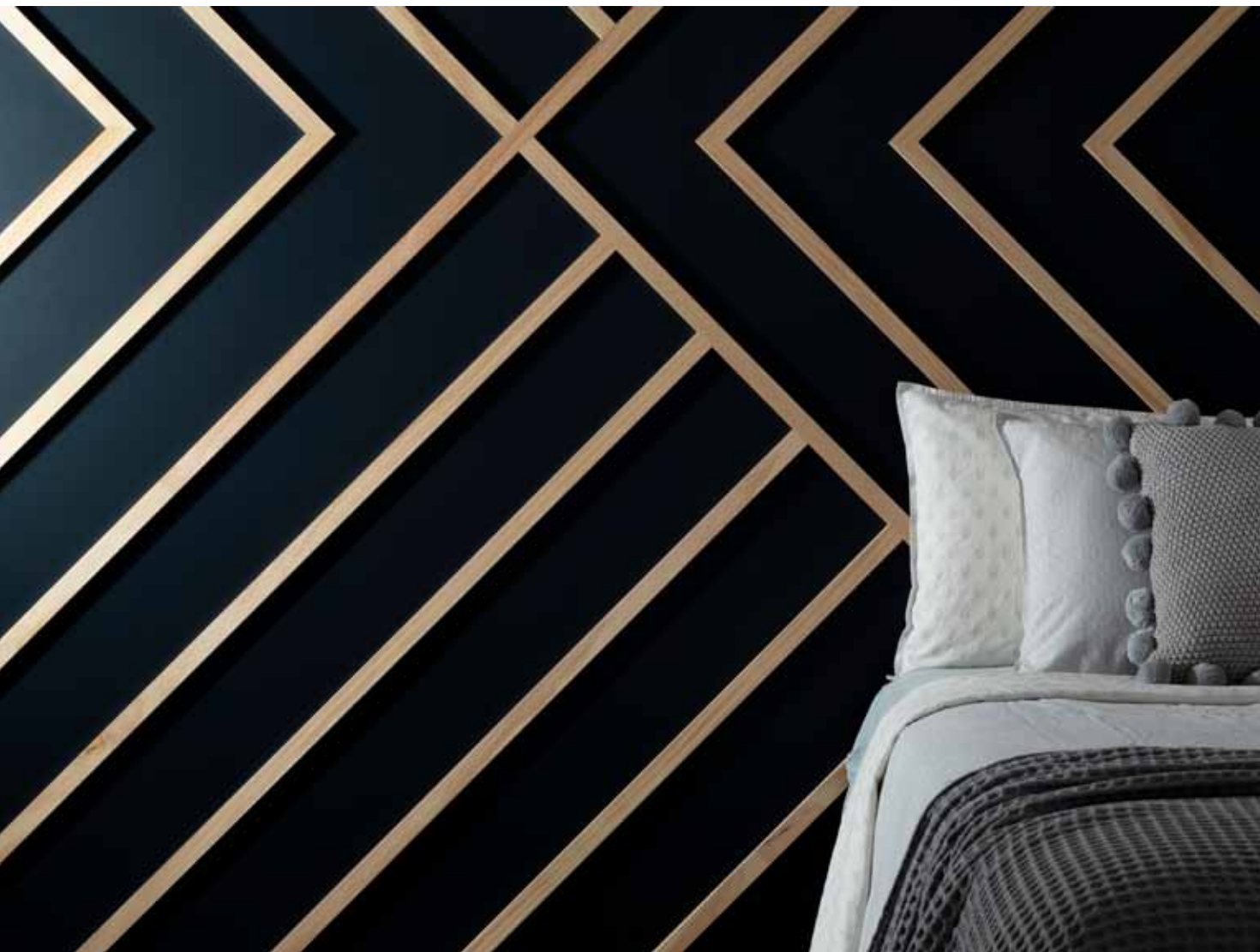


Product: Porta 89 x 18mm Crown Cornice in Primed FJ Pine, 65 x 24mm Picture Rail in Clear Pine, 65 x 25mm Chair Rail Georgian in Clear Pine, 40 x 18mm Panel Mould in Clear Pine, 18 x 11mm Insert Mould in Clear Pine, 92 x 18mm Colonial Architrave in Primed FJ Pine

RESIDENTIAL | ENTRY HALL



Product: Porta 65 x 12mm Dressed All Round (DAR) in Clear Pine, 32mm Dowel in Tasmanian Oak, 190 x 30mm Dressed All Round (DAR) in General Purpose Pine
Stylist: Bree Leech
Photography: Mike Baker

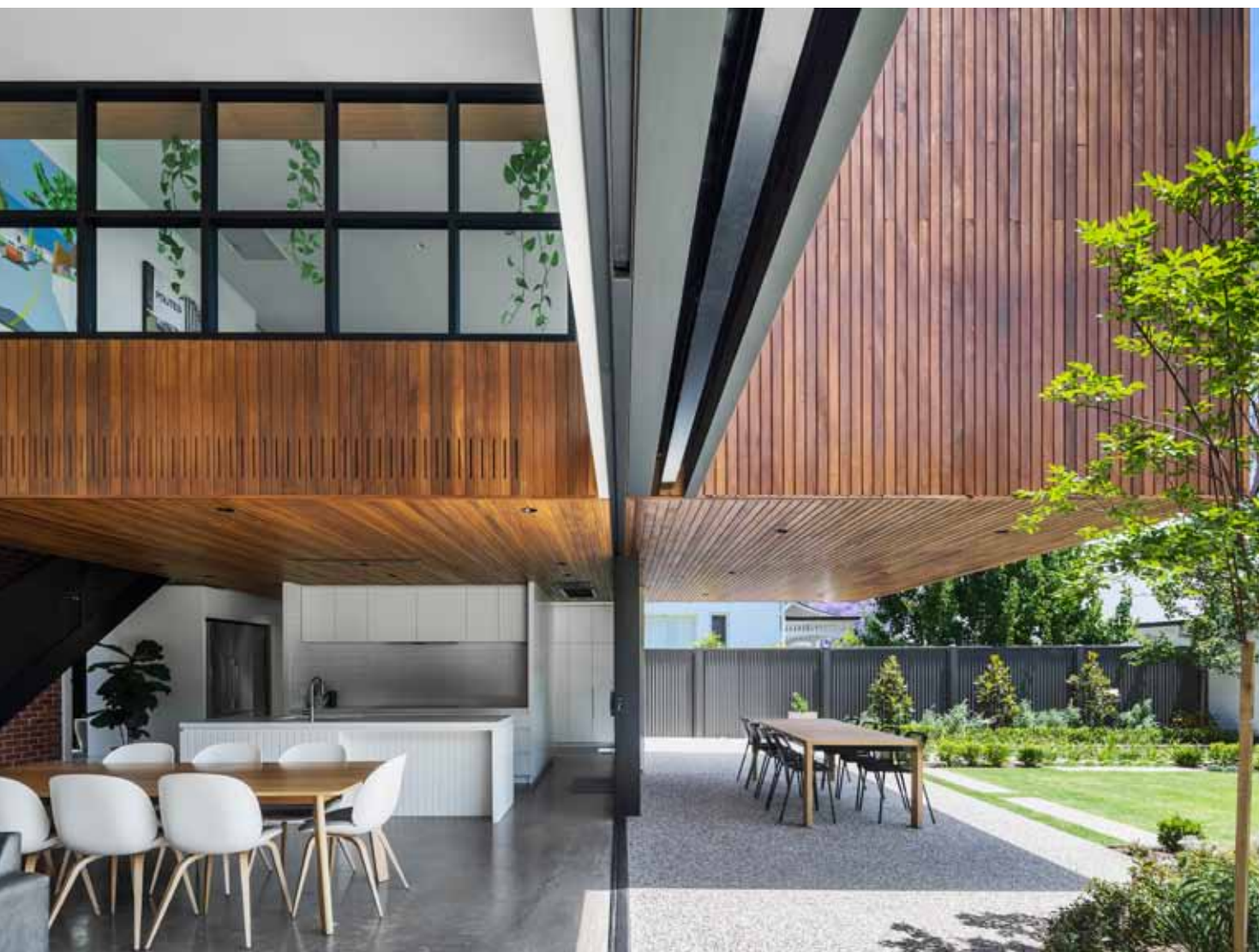


Product: Porta 30 x 12mm Dressed All Round (DAR) in Clear Pine

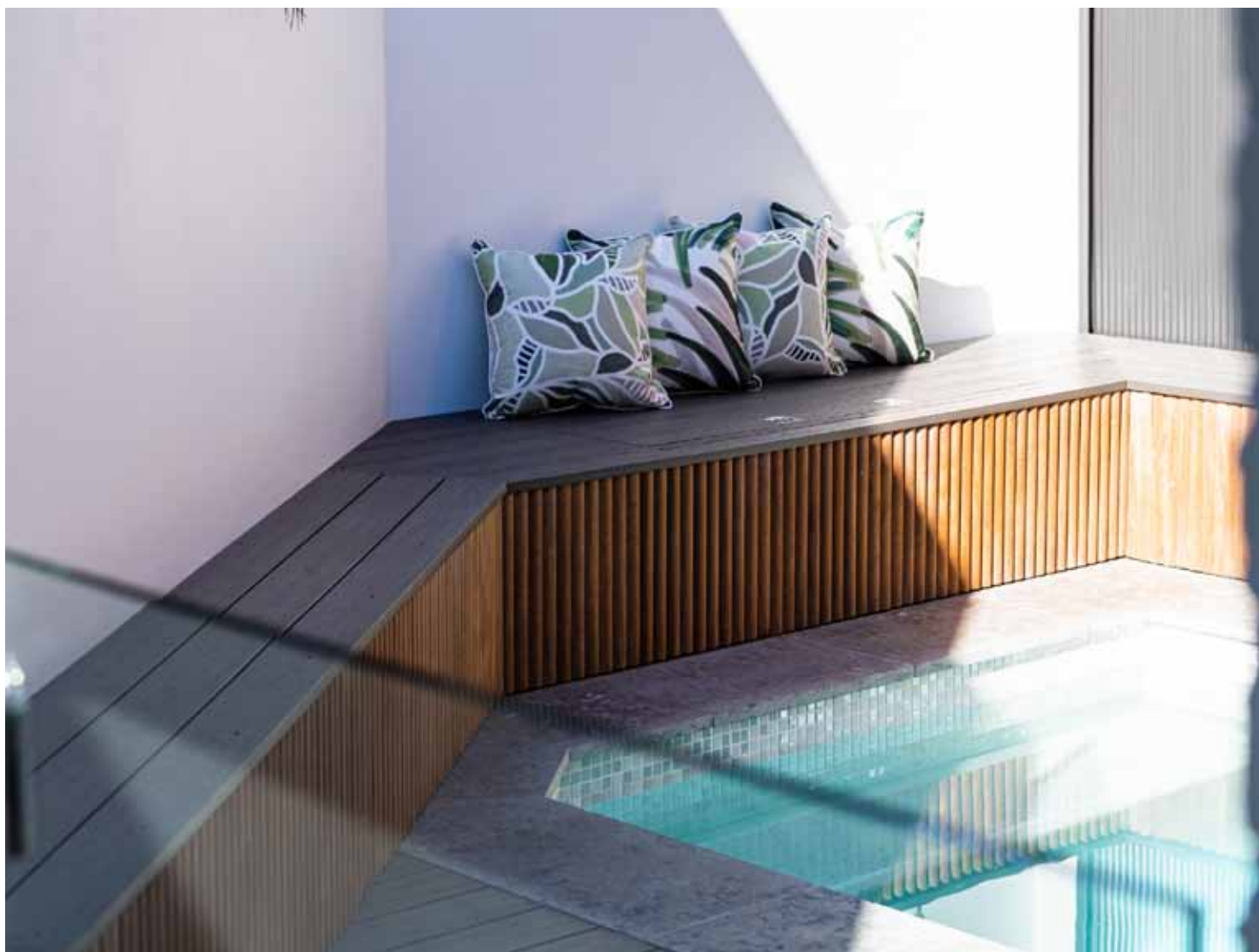


Product: Porta 30 x 12mm Dressed All Round (DAR) in Clear Pine

RESIDENTIAL | ROSE PARK, SOUTH AUSTRALIA



Product: Porta Endure Shiplap in Cumaru
Design/Build: Glasshouse Projects
Photographer: Aaron Citti Photography



Product: Porta Endure Riverine in Cumaru
Build: Longlife Building
Design: Salt Sol Designs
Building Design: Mason Projects
Landscape: Authentic Landscapes



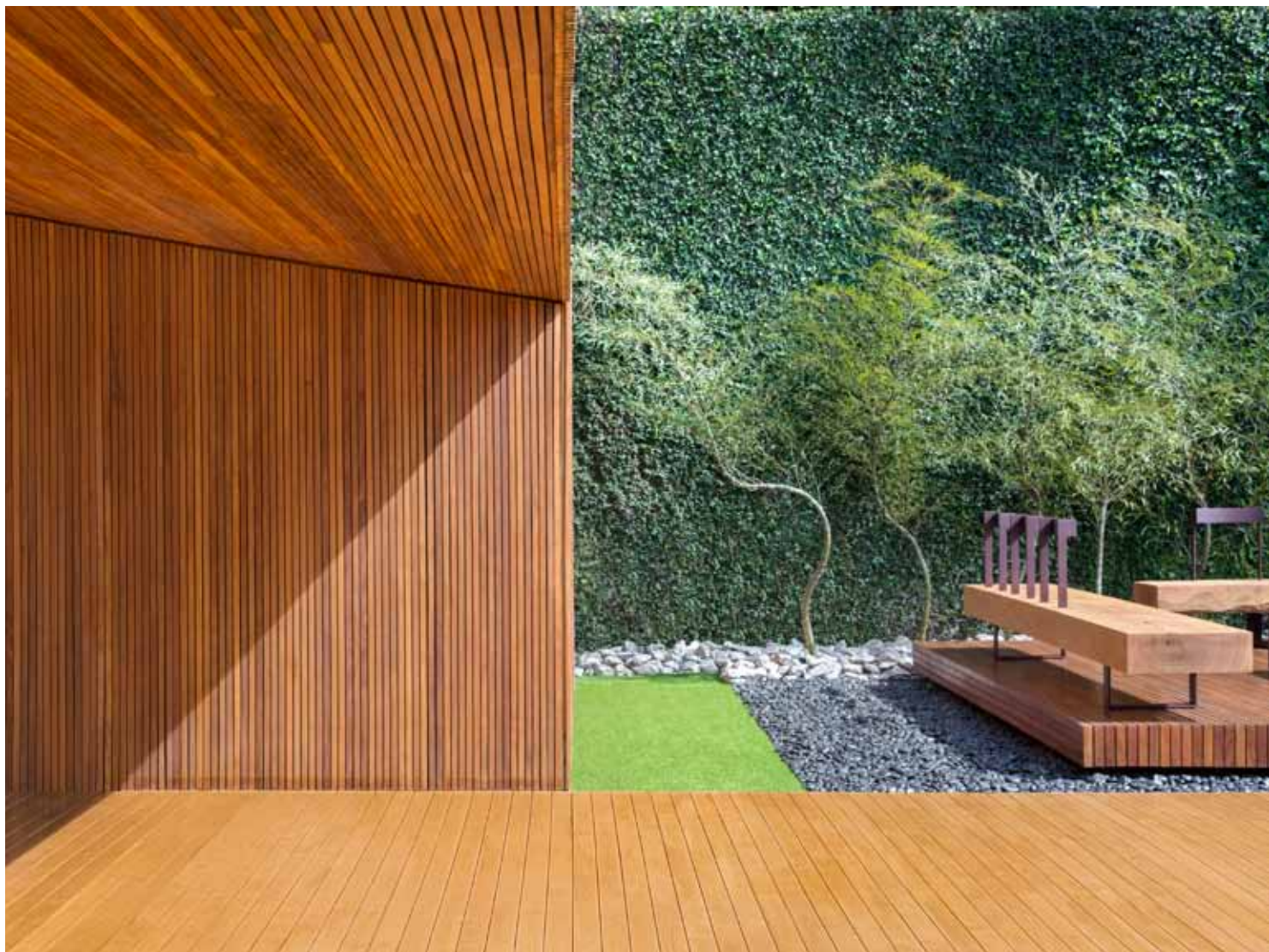
Product: Porta Endure Riverine & Decking in Cumaru
Design/Construction: Mark Browning Landscape Design



Product: Porta Decking & Battens in Cumaru
Builder: T8 Developments



Product: Porta Endure Shiplap, Decking, Posts, & Beams in Cumaru
Architect: Bienefelt Architects
Builder: Voss Builders
Photographer: Ferne Millen Photography



Product: Decking & Battens in Cumaru
Architect: Studio Guilherme Torres
Photographer: MCA Estúdio.



know & love
timber

f @portatimber

@ @porta_timber

1300 650 787

sales@porta.com.au

porta.com.au