



know & love
timber

INNOVATIVE TIMBER SOLUTIONS

f @portatimber @porta_timber





Stylist: Bree Leech | Photography: Mike Baker

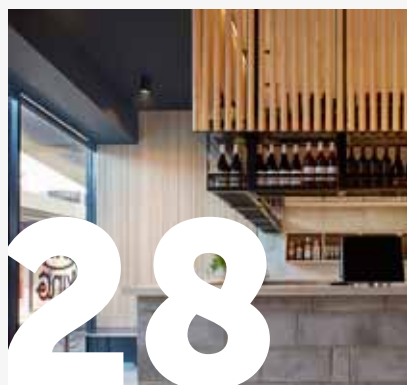
CONTENTS



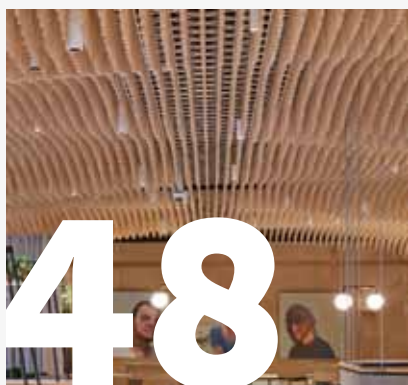
ABOUT PORTA



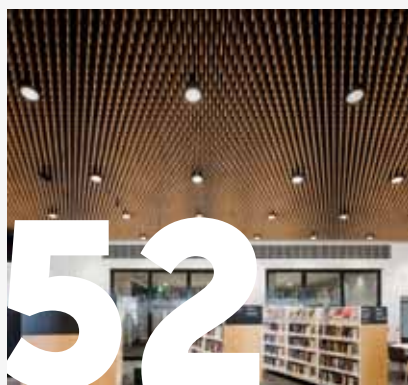
RESIDENTIAL



HOSPITALITY



OFFICE



COMMERCIAL



COMMITTED

Porta is committed to using timbers from responsibly managed forests and resources.

ABOUT PORTA

An Australian-owned and locally operated company. Porta have a rich history spanning over 70+ years proudly manufacturing and distributing a broad range of timber products using various local and imported certified timber species.

We take pride in being one of Australia's leading suppliers of decorative timber products to the home improvement, building, trade and commercial sectors.

Porta's milling and importing operations provide quality timber, moulding and design solutions to the construction industry. At Porta we leverage our expertise in timber to source and provide innovative and unique designs for internal and external applications.

Porta is committed to sustainable and renewable operations giving priority to sourcing timbers from certified sources and are backed by a team that is passionate about timber with expertise to meet your specific needs.

We are Porta.

The people who know and love timber!



RESIDENTIAL



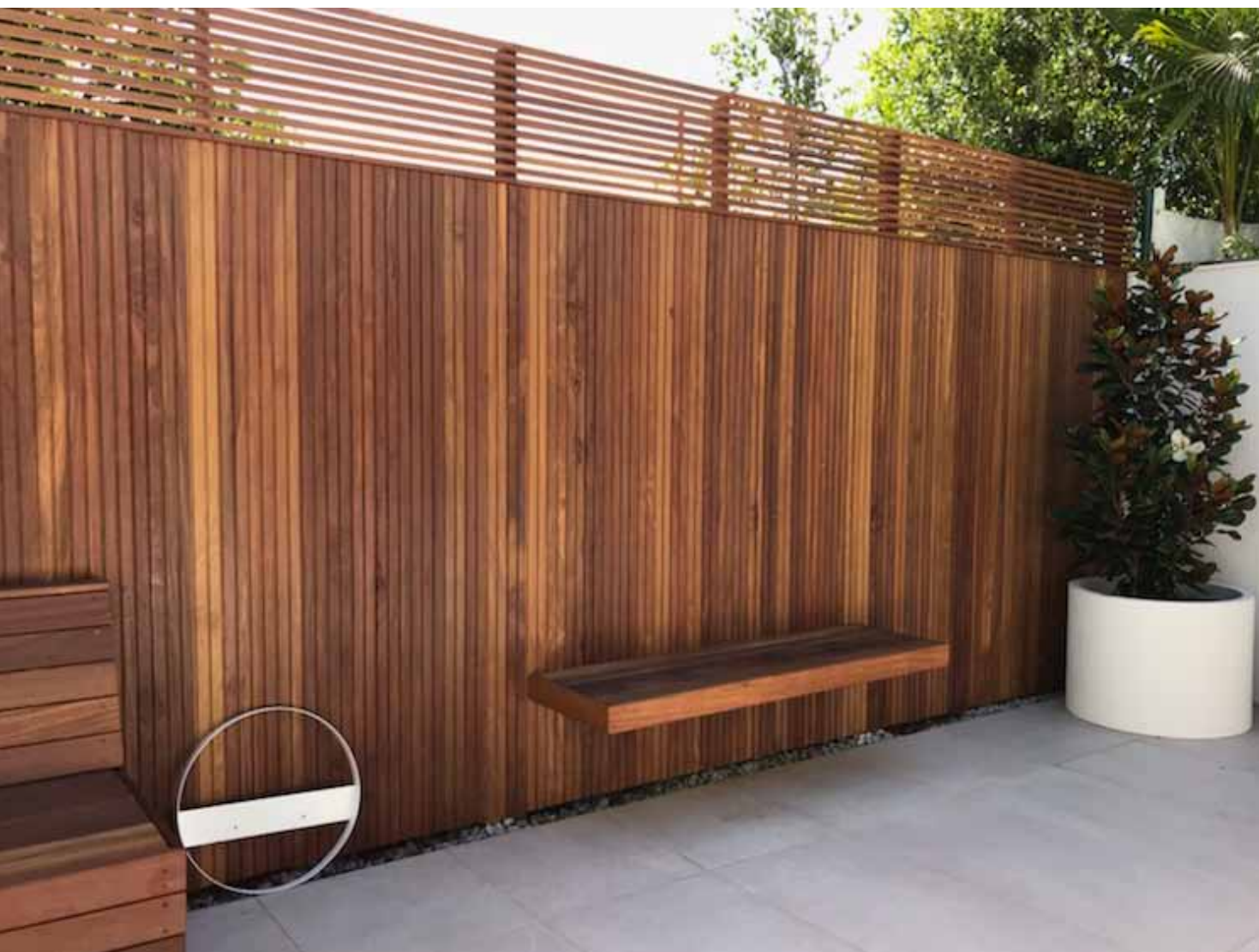
Image: Dlux Australia | Photographer: Mike Baker | Stylist: Bree Leech

RESIDENTIAL | 7 BOUSFIELD STREET, PADDINGTON



Product: Porta Contours Riverine
Build: Bright Black Developments
Photographer: Brock Beazley

RESIDENTIAL | COURTYARD RENOVATION



Product: Porta Endure Strata
Design: Renegade Design Studio
Builder: Coz Constructions

RESIDENTIAL | **OBSIDIAN HOUSE**



Product: Porta Contours Riverine
Build: Story Developments
Photographer: Brock Beazley



Product: Porta 16mm Dowel in Tasmanian Oak
Design: Adriano Pupilli Architects
Project: IMBY™ Kit

RESIDENTIAL | DOWEL HOUSE



Product: Porta Dowel in Tasmanian Oak
Design: FMD Architects
Photographer: Peter Bennetts



Product: Porta Contours Cirque
Builder: Kalka Homes
Joiner: Larry McFarlane Cabinetry
Photographer: Anwyn Howarth



Product: Porta Endure Strata
Landscape: Coolabah Landscaping, Pools & Construction
Photographer: Patrick Redmond



Product: Porta Contours Riverine
Project: Dulux Australia
Stylist: Bree Leech
Photography: Mike Baker



Product: Porta 64 x 26mm Georgian Dado Rail, 40 x 18mm Panel Mould, 18 x 11mm Insert Mould, 30 x 31mm Victorian Dado Rail, 90 x 8mm Cover Strap
Design & Photography: Navy Panel and Co

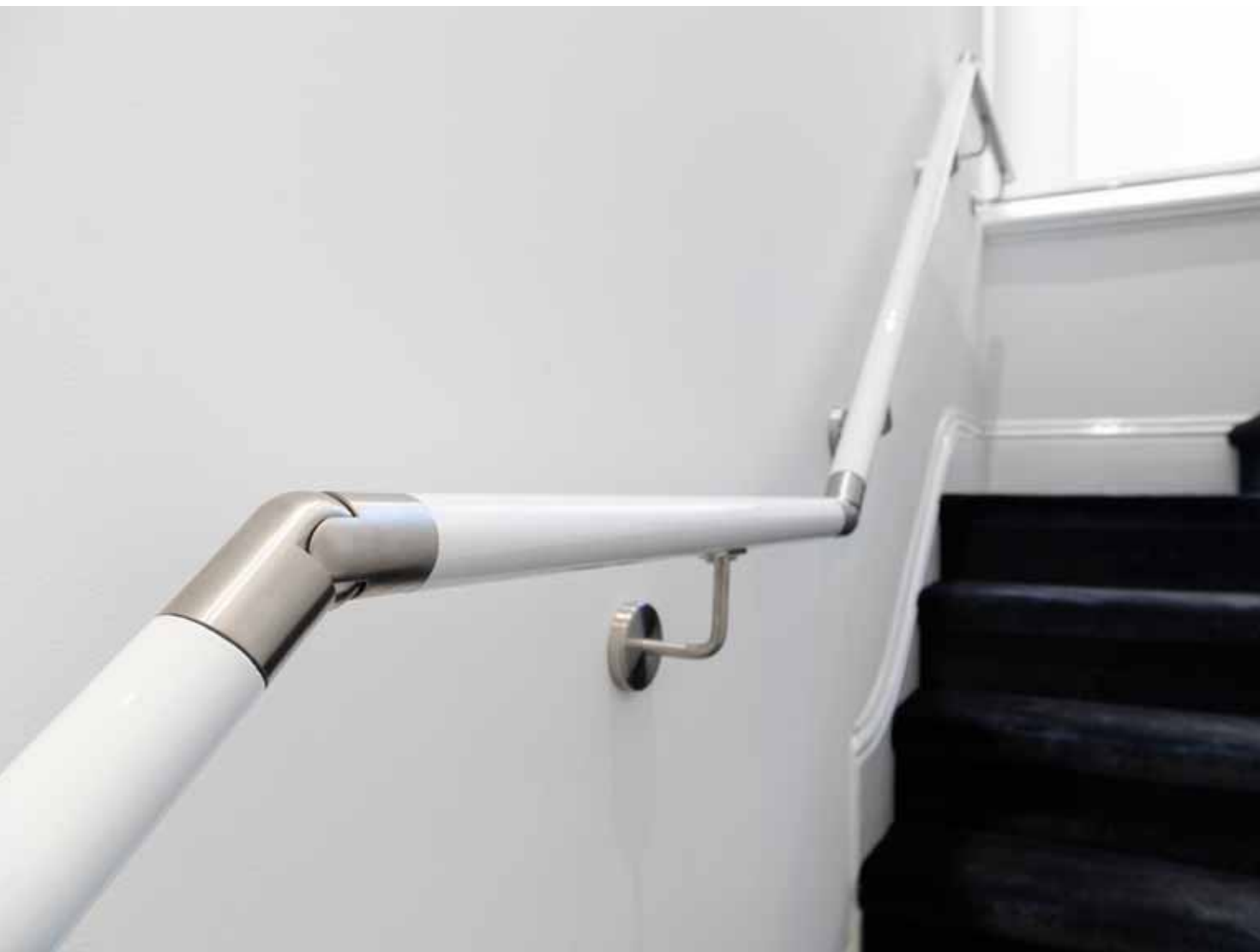
RESIDENTIAL | MOODY BLUES DINING ROOM



Product: Porta 30mm Quad in Tasmanian Oak, 92 x 18mm Bevelled Architrave in Primed FJ Pine, 32mm Dowel, 190 x 30mm Dressed All Round in General Purpose Pine
Stylist: Bree Leech
Photography: Mike Baker



Product: Porta Endure Strata
Builder: T8 Developments

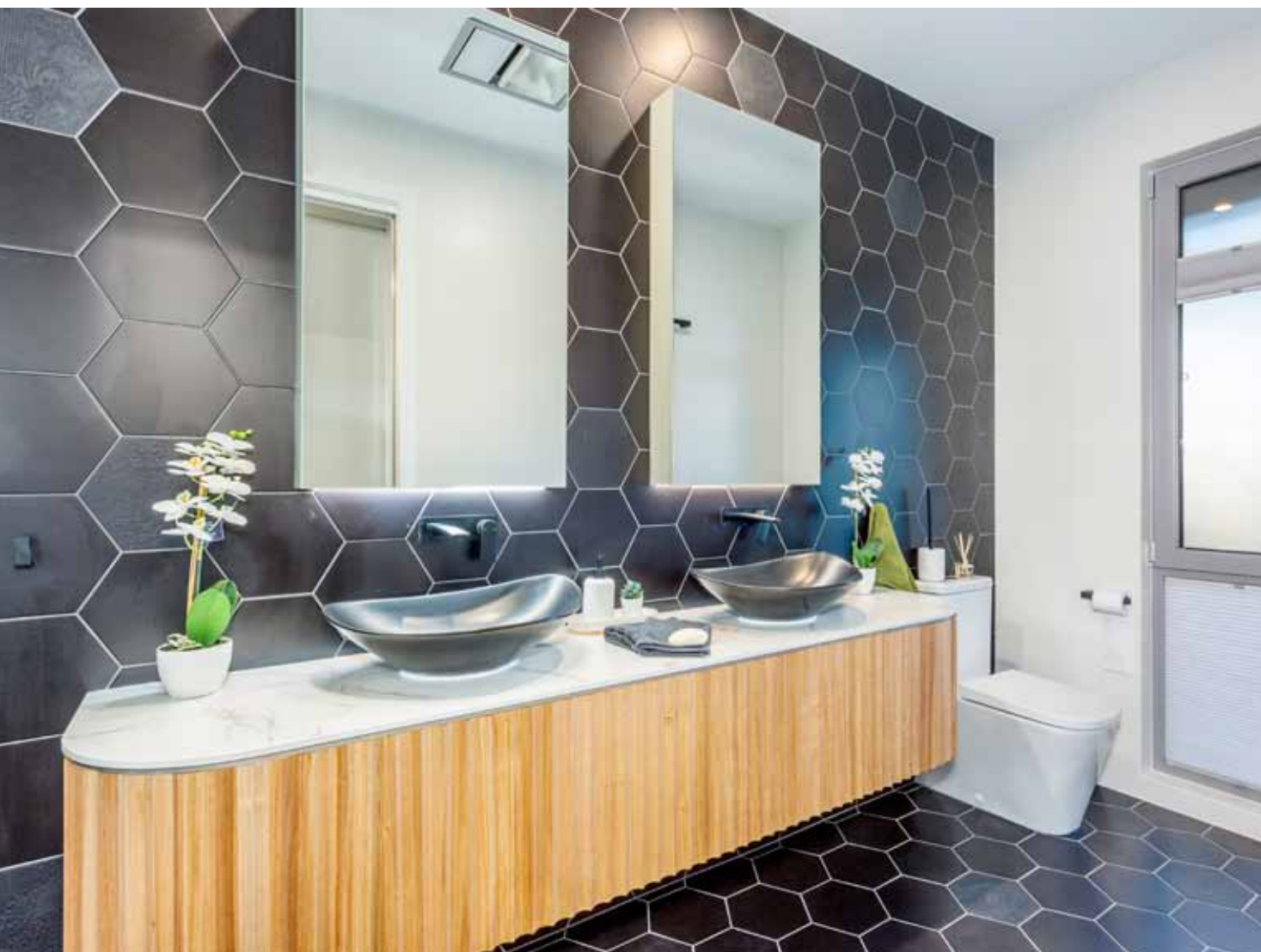


Product: Porta Handrail System, Chrome
Builder: Pocket Builders

RESIDENTIAL | ENTRY HALL



Product: Porta 65 x 12mm Dressed All Round in Clear Pine, 32mm Dowel in Tasmanian Oak, 190 x 30mm Dressed All Round in General Purpose Pine
Stylist: Bree Leech
Photography: Mike Baker



Product: Porta Contours Cirque in Tasmanian Oak
Design: MS Kitchen
Display For: Ideal Building Solutions
Photography: Agent Media

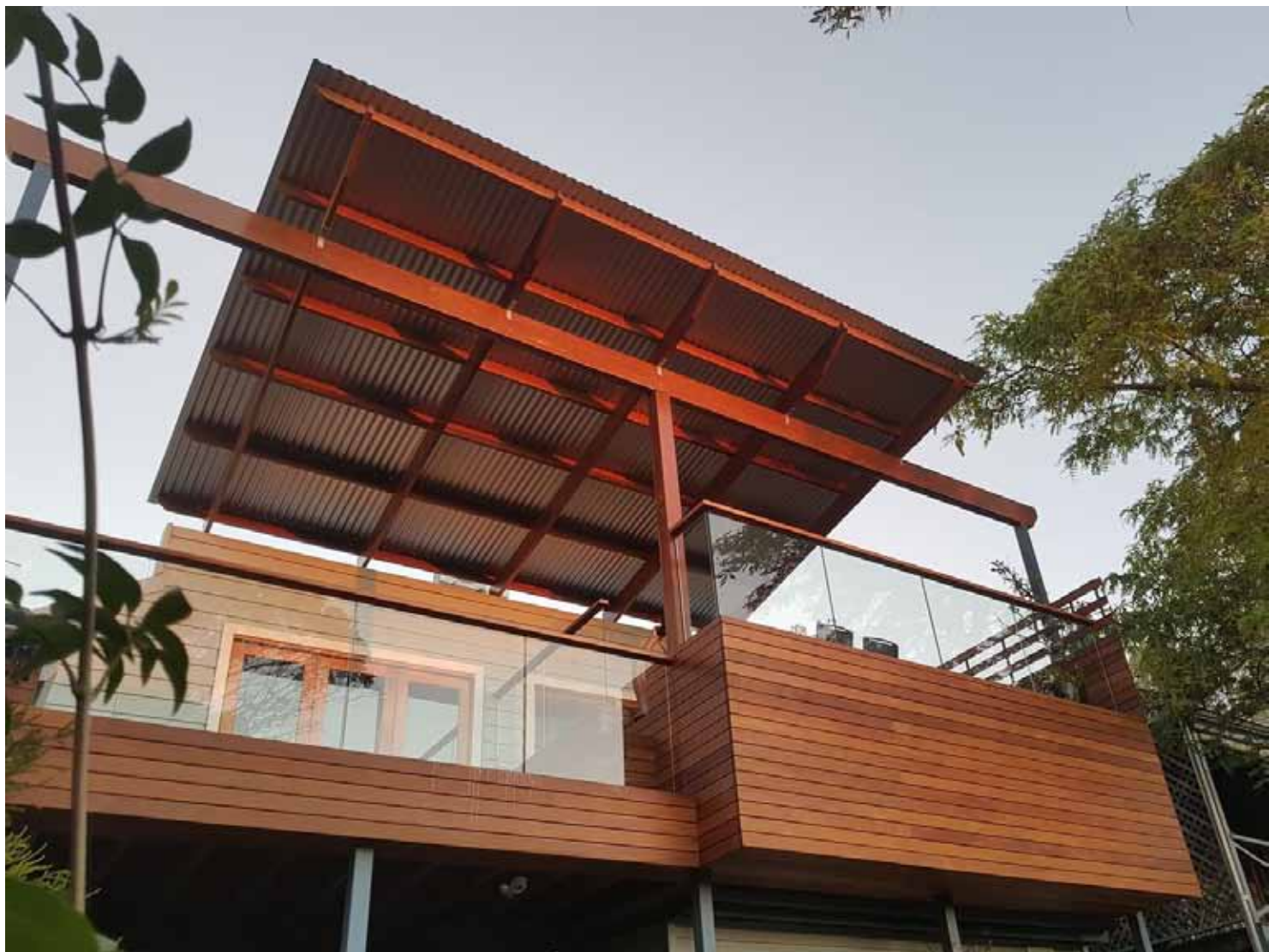


Product: Porta Endure – Shiplap, & Porta Decking, Posts, Beams (in Cumaru)
Architect: Bienefelt Architects
Builder: Voss Builders
Photographer: Ferne Millen Photography

RESIDENTIAL | SO WATT, PLONK DINING RANGE



Product: Porta Dowel in Tasmanian Oak
Maker: SoWatt
Artwork: Emma Finneran | Crockery: Mud Australia
Photography: Nic Gossage



Product: Porta Decking in Cumaru
Build / Photography: Black Swan Carpentry



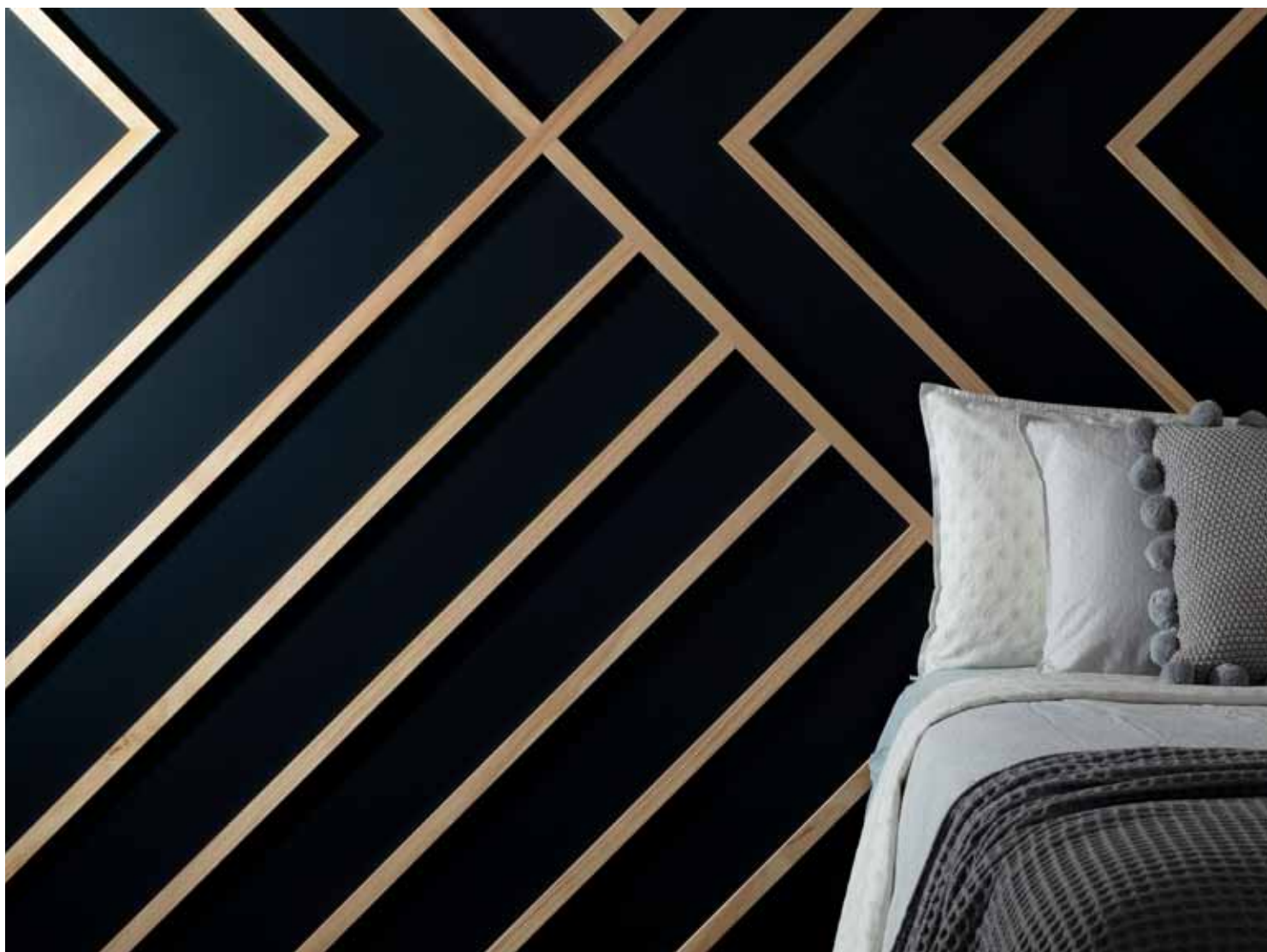
Product: Porta 89 x 18mm Crown Cornice in Primed FJ Pine, 65 x 24mm Picture Rail in Clear Pine, 65 x 25mm Chair Rail Georgian in Clear Pine, 40 x 18mm Panel Mould in Clear Pine, 18 x 11mm Insert Mould in Clear Pine, 92 x 18mm Colonial Architrave in Primed FJ Pine



Product: Porta 30 x 12mm Dressed All Round (DAR) in Clear Pine



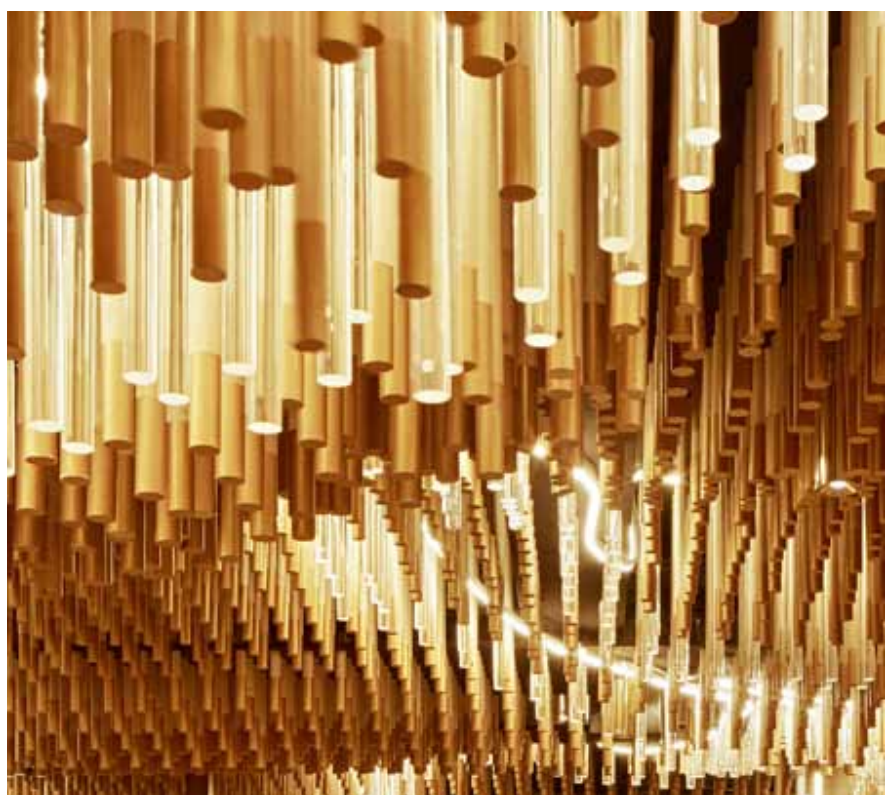
Product: Porta 40 x 18mm Panel Mould in Clear Pine



Product: Porta 30 x 12mm Dressed All Round (DAR) in Clear Pine

HOSPITALITY





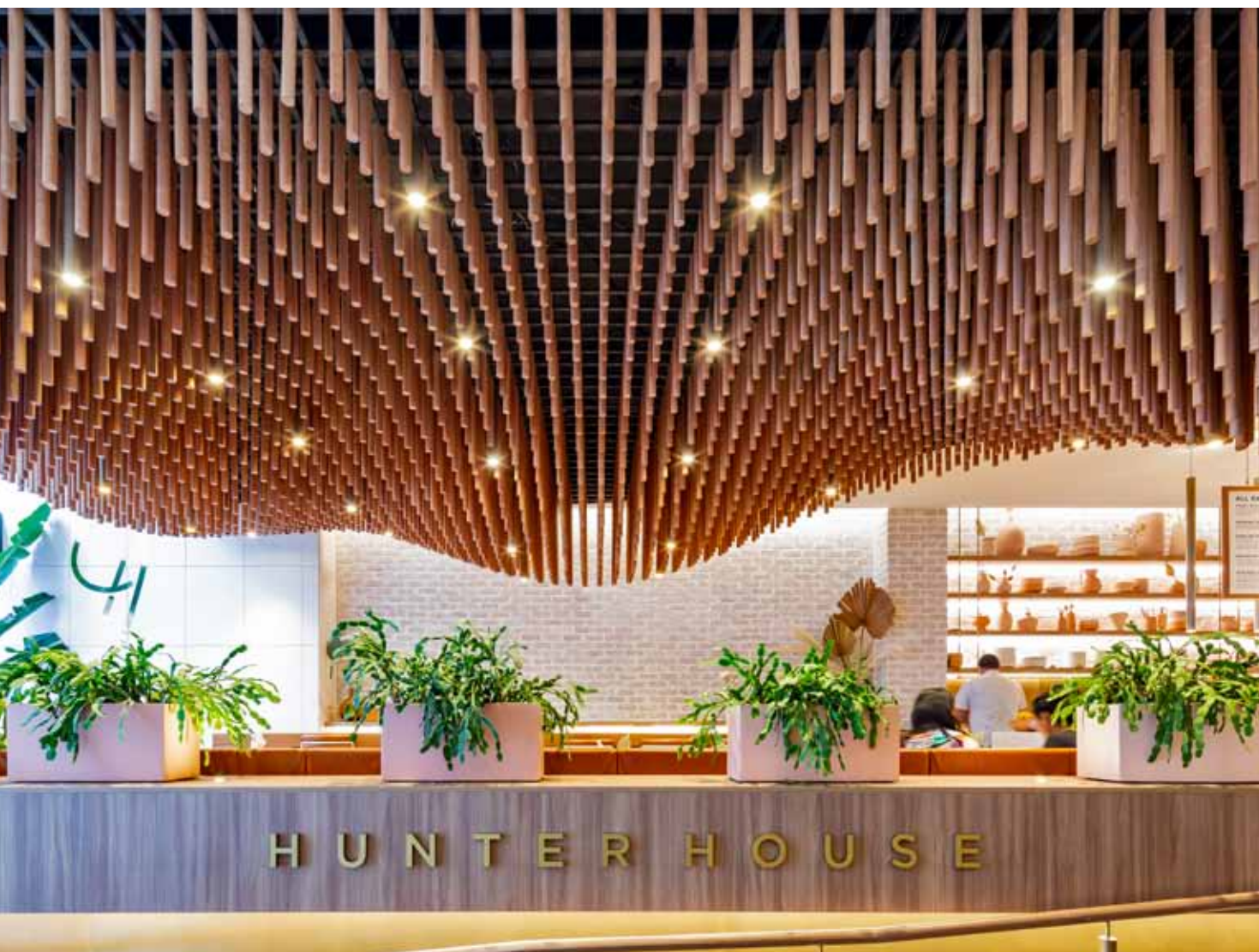
Product: Porta Dowel in Tasmanian Oak
Design: Tonic Design



Product: Porta Contours Valley



Product: Porta Contours Valley
Design: Setsquare Studio
Joinery: The Makery Club



Product: Porta Dowel in Vic Ash
Architect: Fender Katsalidis, Builder: Mettle, Installer Dunrite Linings, Feature Ceiling: Sculpform
Photography: Guy Wilkinson

HOSPITALITY | BROADSHEET POP UP RESTAURANT



Product: Forescolor Blue
Design: Foolscape Studio
Photographer: Broadsheet



Product: Porta 30mm, 35mm & 40mm Dowel in Tasmanian Oak, and 40 x 20mm Half Round Dowel in Tasmanian Oak
 Design: Bergman & Co
 Build: VN Projects
 Photographer: Tom Roe



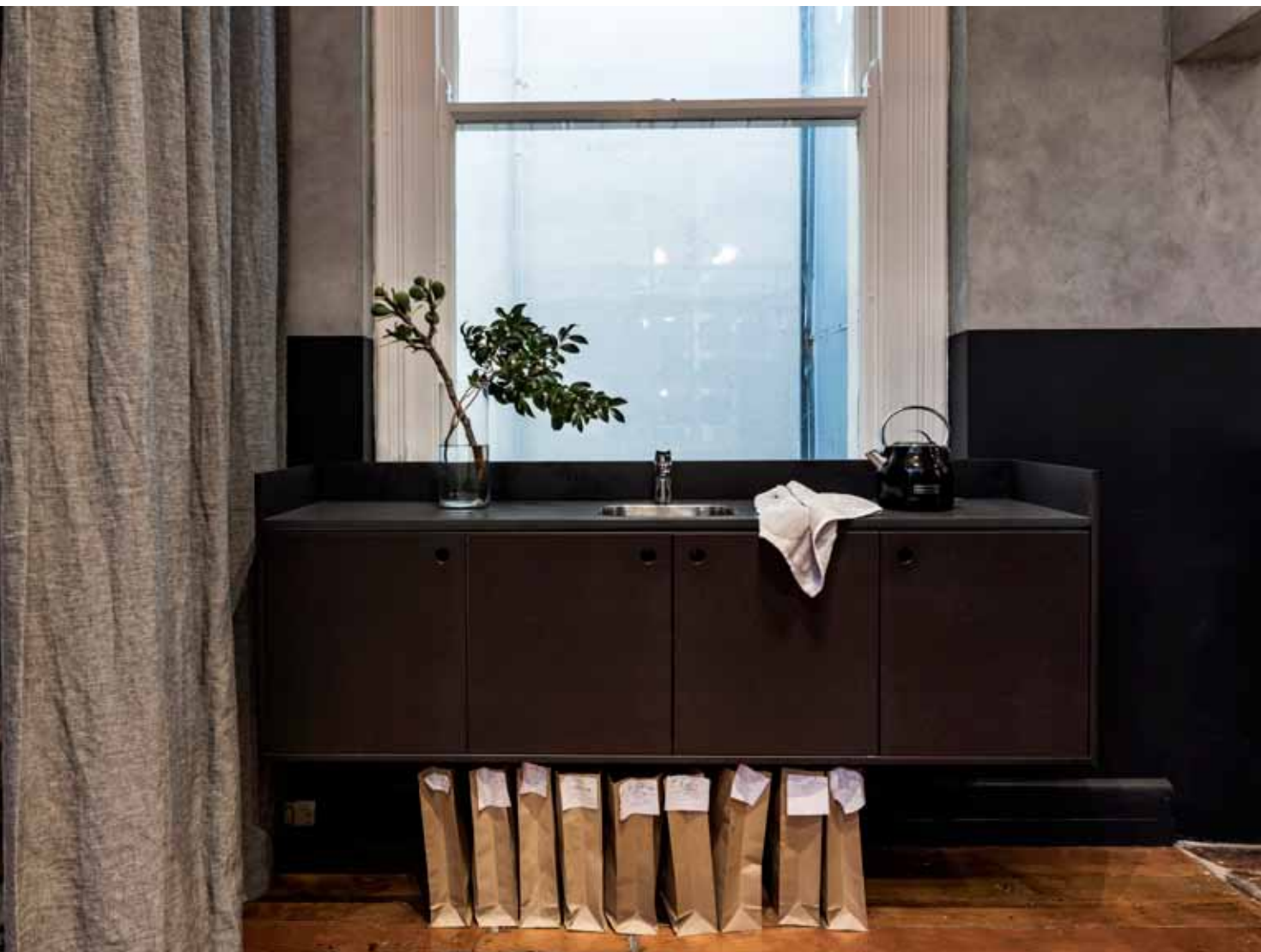
Product: Porta Contours in Cirque Pre Primed Pine
Stylist: Bree Leech for Feltex Carpets
Photography: Mike Baker



Product: Porta Contours in Strata (Wall), Riverine (Back Wall), and Plateau 39 Alternating with Riverine (Bottom Counter) in Tasmanian Oak
Stylist: Bree Leech
Photography: Mike Baker



Product: Porta Contours Riverine in Tasmanian Oak
Design: Anna Chisolm, Bungalow Trading
Builder: TGC Building



Product: 18mm Forescolor Black
Design: INK Interior Architects
Photographer: Michael Wee



Product: Porta 15 x 7mm Half Round Dowel in Tasmanian Oak; 19mm, 40mm & 64mm Round Dowels in Clear Pine; 19mm & 40mm Round Dowels in Tasmanian Oak; 9mm & 19mm Quad in Tasmanian Oak; and 50 x 19mm Dressed All Round in Pine
Design: Bergman & Co
Photographer: Nicole England



Product: Porta Contours Riverine
Design: Strutt Studios
Build: Sheeth Project

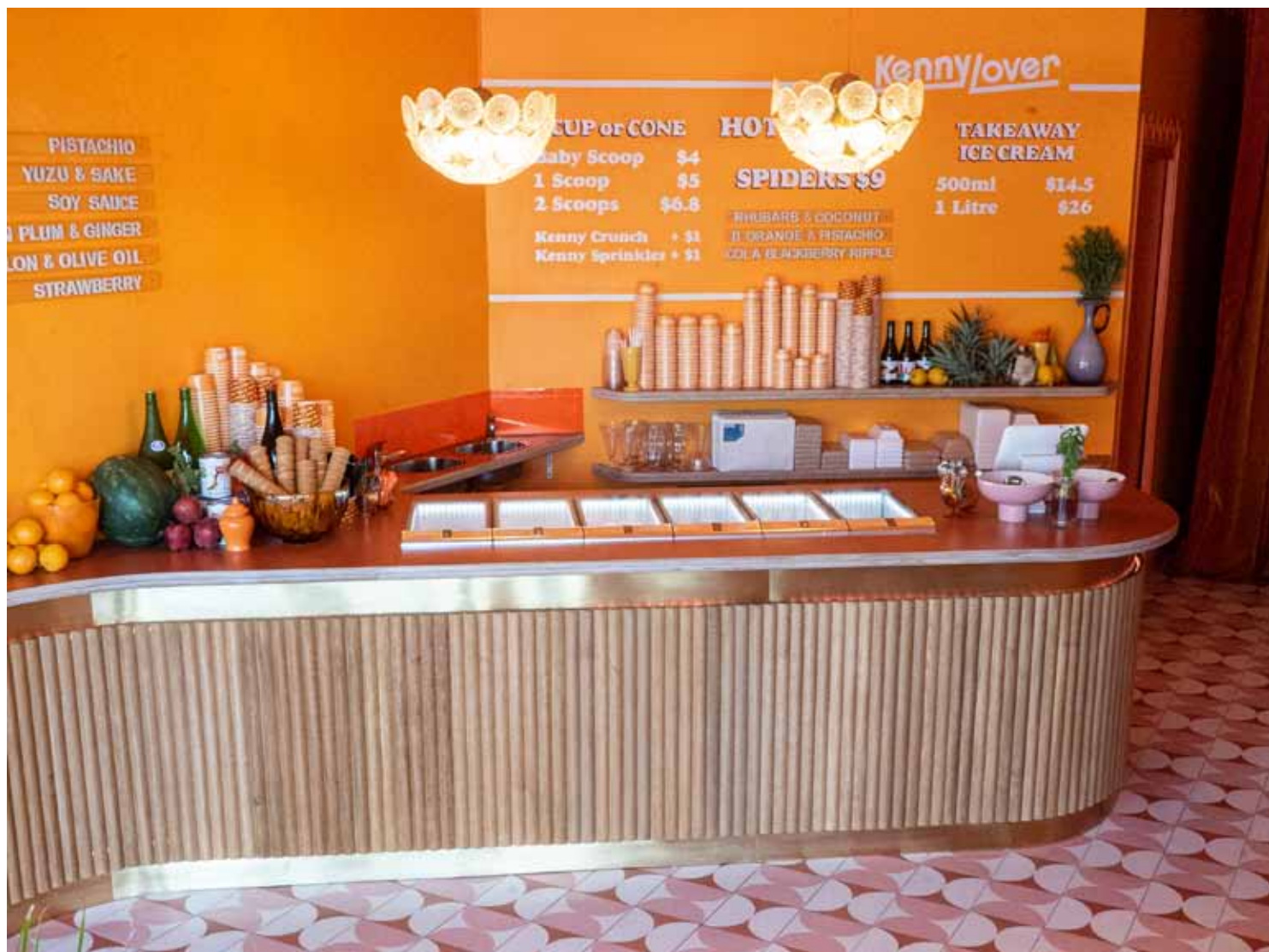


Product: Porta Endure Riverine
Design: Mark Browning Design



Product: Porta 40mm Dowel and 40 x 20mm Half Round Dowel in Tasmanian Oak
Design: Urbourne Architects
Builder: Crown Shopfitters

HOSPITALITY | KENNY LOVER!



Product: Porta Contours Riverine
 Fitout: Rosa & Co Fitouts
 Photographers: Hotel Naomi- Lewis and Callum Mitchell



Product: Porta Contours in Crest (Walls) and Cirque (Bedhead & Joinery) in Tasmanian Oak, Walnut Stain
Stylist: Bree Leech
Photography: Mike Baker



Product: Porta 45mm Dowel in Tasmanian Oak
Design: Makro Design
Fitout: Mazs Corp Shopfitting

HOSPITALITY | SUPERNORMAL NATSU POP UP RESTAURANT



Product: Porta 40mm Dowel in Tasmanian Oak
Design: Relm Furniture
Photographer: CTN Photography & Relm Furniture



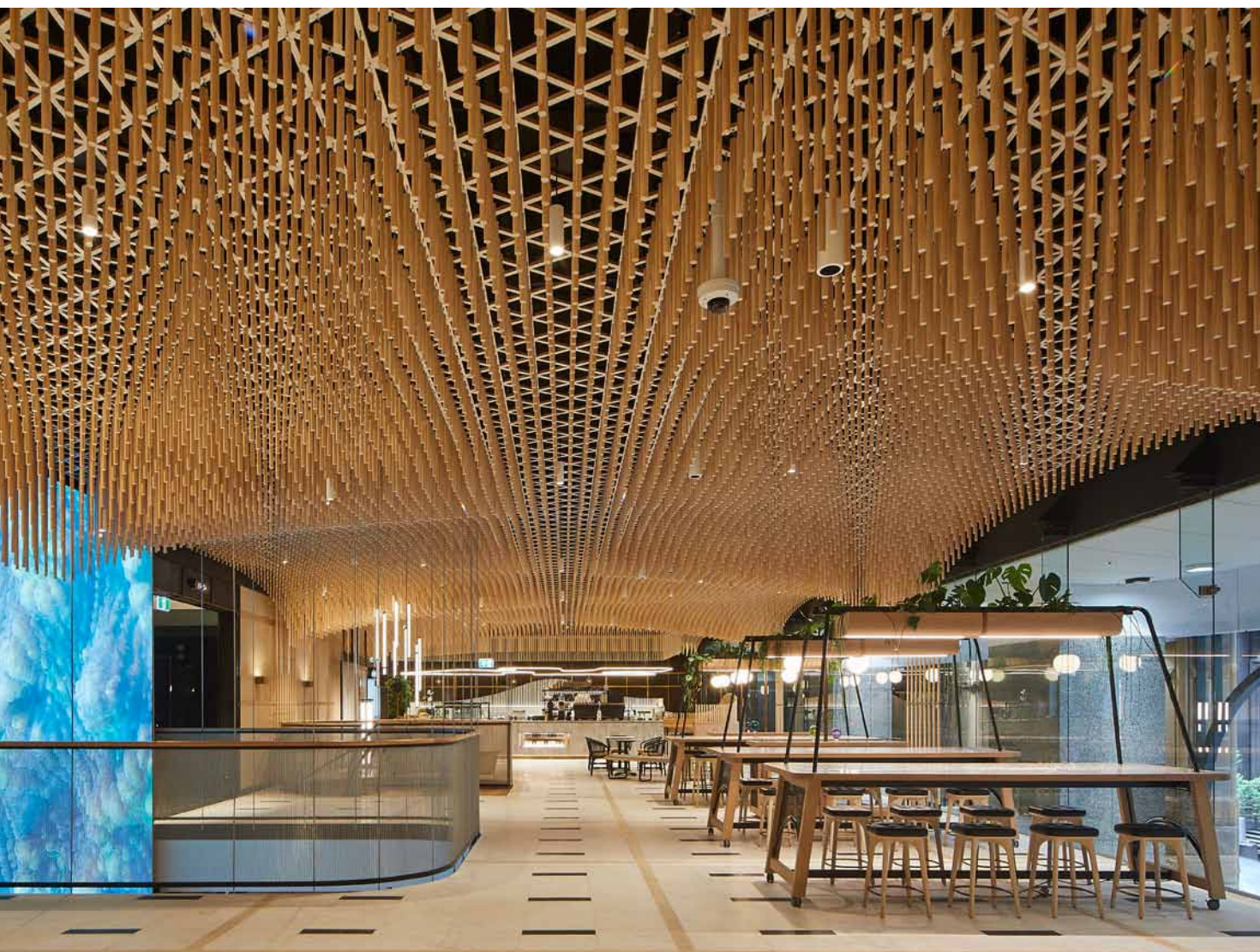
Product: Porta Contours Riverine
Design / Photography: Ottofirm

OFFICE





Product: Porta Contours Riverine and Cirque
Design: Foolscap Studio
Images: Nicholas Wilkins



Product: Porta 30mm Dowel in Pine
Designer: Adriano Pupilli Architects with Siren Design
Builder: Graphite Projects | Installer: Keystone Linings and Acoustics
Photographer: Tyrone Branigan



Product: Porta Contours Strata
Design: Cottee Parker Architects

COMMERCIAL



Design: Brown Falconer Architects | Development / Installation: Guy Surfaces and Keystone Acoustics | Photographer: David Sievers

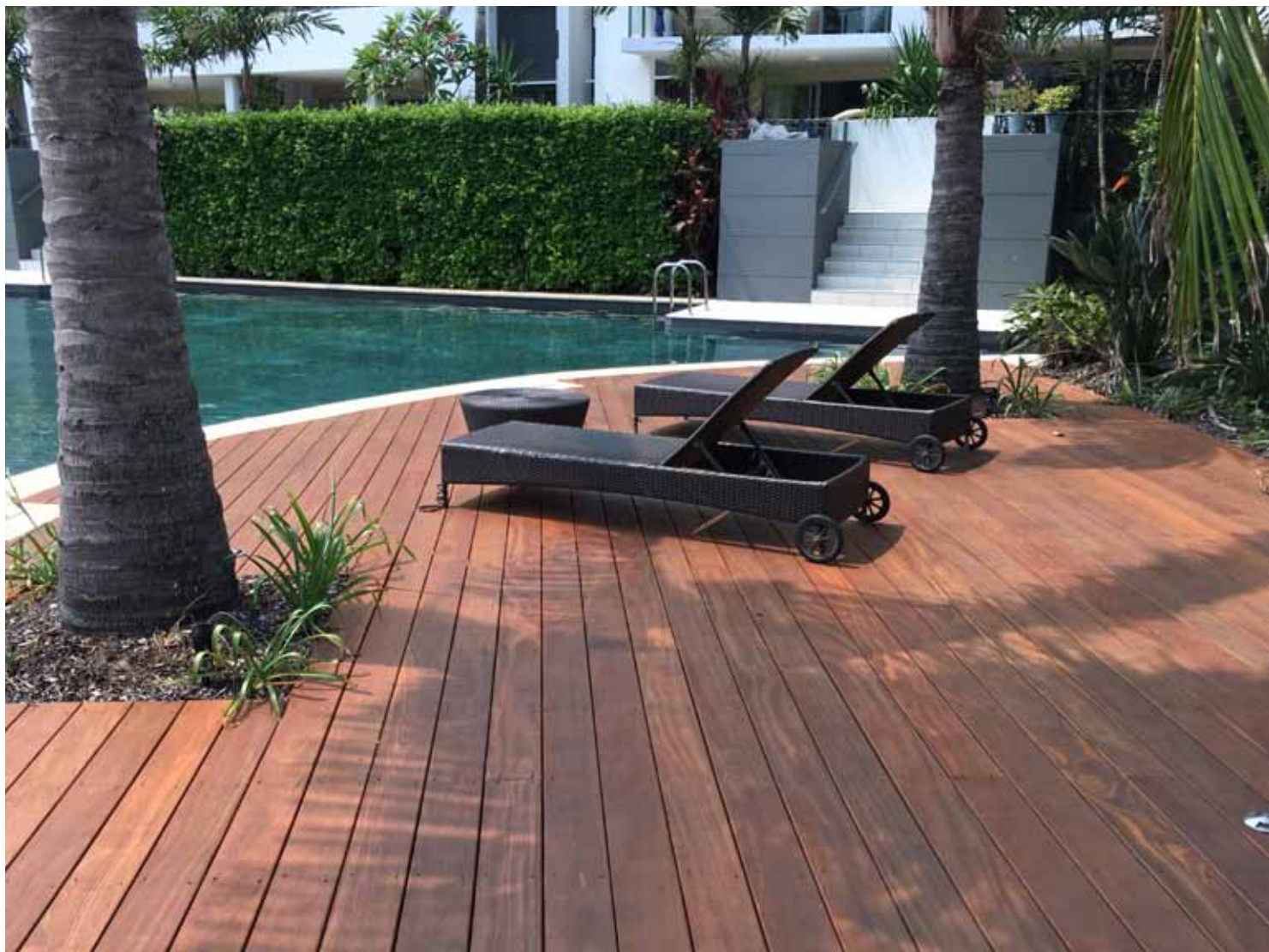


Product: Porta Contours Riverine & Porta Endure Riverine coated with Intergrain Ebony
Architect: Carter Williamson Architects
Builder: Westbury Constructions
Photographer: Brett Broadman

COMMERCIAL | QUT P BLOCK KELVIN GROVE



Product: Porta Contours Strata, Plateau-39 & Riverine in Tasmanian Oak
Architect: PDT Architects
Photography: Scott Burrows



Product: Porta Decking in Cumaru

COMMERCIAL | ALDINGA LIBRARY, SOUTH AUSTRALIA



Product: Porta 19mm Dowel in Clear Pine
Design: Brown Falconer Architects
Development / Installation: Guy Surfaces and Keystone Acoustics
Photographer: David Sievers



Product: Porta Endure (Bespoke Profile)
Architect: Jackson Clements Burrows Architects
Builder: Connell Constructions



For more project inspiration, follow us [f @portatimber](#) [@ @porta_timber](#)

