



know & love
timber

FORESCOLOR

Solid colour MDF Sheets





FORESCOLOR

Coloured MDF | Solid colour

FORESCOLOR is an innovative solid colour MDF providing endless options for decorative interior applications.

An engineered solid colour board suitable for demanding environments where durability and lasting vibrant appearance are required. The organic pigment is integrated directly into its wood fibres, which creates a consistent colour distribution throughout the entire board.

Available in a broad range of colours. Ideal for restaurants, cafes, retail, shop fit outs, commercial interiors, furniture, toys and schools.

Suitable for wall paneling, ceiling and joinery applications. Porta Forescolor is supplied unfinished as sheets. Achieve custom looks with third party manufacturing. Create striking designs with custom coatings, laminated finishes or routed panels.

Vibrant & solid colour throughout



Moisture Resistant
MR Rated



Non Toxic
E0 Rated



Sustainable
FSC® Certified

Range - various colors and sizes

Supplied unfinished | Sheet Size: 2440 x 1220mm / 1220 x 607mm | Thickness: 5* / 9* / 18mm
Selected colours only* see price list for availability chart.



Minimum orders and lead times may apply. Images are indicative only, please contact for a sample. Each fibre in FORESCOLOR is individually dyed. Variations in colour tone or hue may occur in the production process as individual wood fibres will absorb varying amounts of dye.



Technical Details

	Unit	9mm	18mm
Board Weight	Per square metre	6.8 Kg/m ²	13.0 Kg/m ²
	2440 x 1220 mm	20kg	38kg
Board Density	Kg/m ²	760	720
Moisture Content	%	5-13	
Internal Bond	KPa	0.8	0.7
Bend Strength	Mpa	35	
Modulus of Elasticity	MPa	>3000	
Thickness Swell	%	<12	<8
Fire Resistance	Tested in accordance with AS 5637.1 rated to meet Group 3 level performance for use in Class 2-9 building applications in accordance with NCC 2019 Building Code of Australia		
Insulation Properties	Thermal conductivity varies with thickness. Usual range is 0.05 to 0.08 kcal/m Sec. °C.		
Dimensional Stability	Thickness ±0.4mm for 9mm boards and ±0.5mm for 18mm board. Length tolerance ±3mm.		
Acoustic Properties	9mm: STC Class 31dB 12mm: STC Class 31dB 18mm: STC Class 31dB		

Available on request. Minimum order required.

FORESCOLOR FR is made by impregnating the fibres with halogen-free flame retardant and resin technology. FORESCOLOR NAF has no formaldehyde resin used during the manufacturing process.

Certification

Porta Forescolor Coloured MDF is FSC® certified as being responsibly harvested and processed and is accredited by a third-party organisation. This assures protection of the forests' biodiversity and ecological processes and ensures the local workers, communities and indigenous populations rights are upheld. Porta will provide a compliance guarantee with all orders indicating the Porta Cumaru timber has FSC certification.



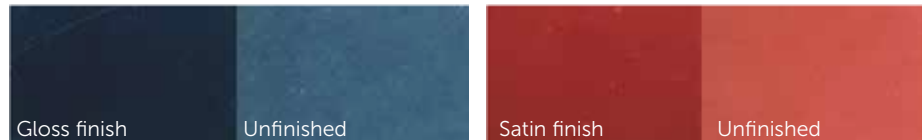
How to specify Porta FORESCOLOR MDF Sheets

Porta Forescolor + 'Colour' + 'Sheet Size x Thickness' + 'Finish by selected third party provider'
 e.g. Porta Forescolor - Black - 2440x1220 x 18mm - Satin 25% (as per manufacturers instructions)

Indicative finish - Blue / Red

Porta Forescolor is supplied unfinished to custom coat for your desired look.

We recommend all surfaces have a suitable coating system to protect them against marking and moisture.



Care

Whilst FORESCOLOR is made from a higher moisture resistant Medium Density Fibreboard (MDF) than standard MDF it should be protected against moisture and oils from hand contact, otherwise the surface will be affected. If there is the possibility of hand contact or ongoing moisture, oils or grease the surface must be coated. As with any wood based panel it cannot be made totally waterproof and care should be taken to wipe up spills immediately, ensuring the material is not exposed to high or continuous levels of moisture, steam and humidity.

General Cleaning

Using a mild household spray to wipe down the panel with a soft cloth. Take care not to rub too hard. Dry the panel using a soft cloth and do not leave any residue on the panel. Alternatively use Methylated Spirit on a soft cloth, using a circular cleaning motion. Thoroughly clean over the wider area with a soft damp cloth with detergent to remove any residual Methylated Spirit.

Always refer to the recommendations provided by the cleaning product manufacturer before use.

DO NOT use any Abrasive Cleaners, Scouring Pads or Abrasive Papers, Acids and Alkalis, Solvents, Thinners, Turpentine (Turps), Ammonia, Bleach, Acetone, MEK (Methyl Ethyl Ketone) or any other cleaning agents containing organic solvents or the above mentioned products on FORESCOLOR panels. Avoid contact with sharp implements. Use range hoods whenever cooking, to avoid steam and cooking oil vapours from adversely effecting surfaces.



1300 650 787 sales@porta.com.au porta.com.au



know & love
timber

1300 650 787

sales@porta.com.au

porta.com.au



Black - joinery - Ink Interiors



Light Grey - wall panels - Cosh Living Office



Light Grey - exhibition stand by Addition Studio

 **FORESCOLOR**
Coloured MDF | Solid colour

people who know & love timber