



know & love  
timber

# PORTA ENDURE

Timber Cladding

Durable, decorative and  
natural exterior solution





**Porta is a trusted Australian-owned company with over 70 years expertise in manufacturing innovative products using sustainable certified local and imported timber.**

**Porta Endure Timber Cladding combines the performance of Class 1 durable timber with designer profiles to create a range of timeless looking, long-lasting exterior finishes.**

- Select grade
- Lasts 40+ years above ground
- Residential & mid-rise commercial applications
- Optional pre-coating services available

**Supplied in Porta Cumaru hardwood, a high performing Class 1 durable timber.**

Porta Cumaru is termite resistant and hard wearing with near zero leaching. Other species available on request.

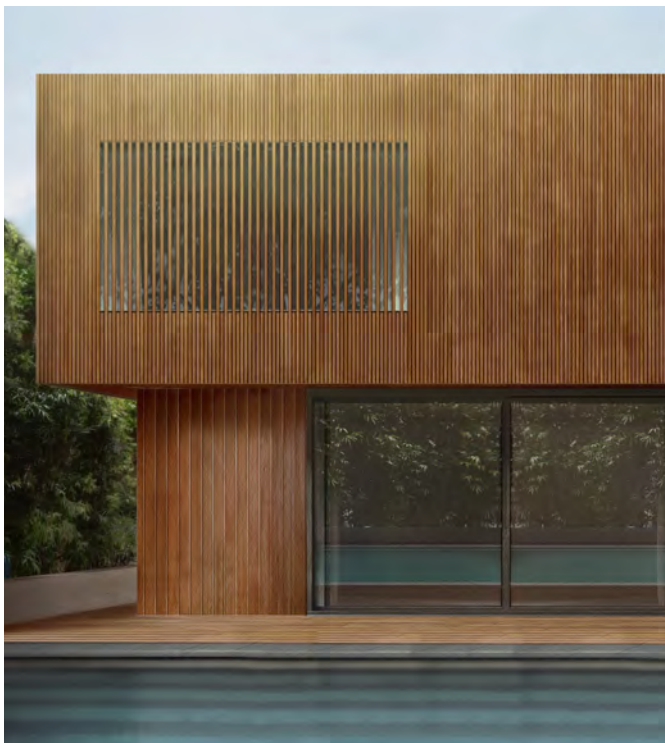


**Available in designer textured profiles and traditional shiplap cladding.**

Achieve a complete exterior solution with Porta Endure Riverine and Porta Cumaru. Pictured below, on the first floor is Porta Endure Strata Cladding and Porta Cumaru Battens. Used on the ground level is Porta Endure Shiplap Cladding and Porta Cumaru Decking.

**Weather to silver-grey or maintain the beautiful mid-brown tones.**

Pictured below, on the first floor is Porta Endure Riverine that is run vertically and is finished with a clear coating, allowing it to weather to grey tones. On the ground level is Porta Endure Shiplap which is run horizontally, and the colour is maintained with a pigmented coating.



## CLADDING RANGE

Porta Endure Cladding is supplied in Class 1 durable FSC® Certified Porta Cumaru Hardwood, other species are available on request. For the full range, see current availability online.

### TEXTURED PROFILES



<b>RIVERINE</b>	<b>CREST</b>	<b>STRATA</b>	<b>VALLEY</b>
ENTA7823	ENTC7823	ENTD7823	ENTK7823

**PROFILE** 91x23mm  
**COVER** 78mm  
**GROOVE** N/A  
**LENGTH** 2.4, 3.0M

- The textured profiles are available with a Tongue & Groove connection which offers better alignment.
- The tongue and groove connection is interchangeable with other designs in the textured profiles range to make unique patterns.

### SHIPLAP PROFILE



**SHIPLAP**  
ENTS12219

**PROFILE** 140x19mm  
**COVER** 122mm  
**GROOVE** 11x9mm  
**LENGTH** RL

- Available as standard with a Tongue & Groove connection
- Available made to order in alternative connection details, D-Joint and Face Fix are available on request
- D-Joint is a specialty engineered connection that has been designed for increased fixing strength and superior weather tightness

## CERTIFIED TIMBER

Porta Cumaru is FSC® certified as responsibly harvested and processed. The Forest Stewardship Council® is a global, not-for-profit organisation dedicated to responsible forest management.



## TECHNICAL INFORMATION

**Density:** 1085kg/m<sup>3</sup> **Hardness:** 14.8 Janka kN **Durability:** Class 1

**Grading:** AS 2796.1 Section 8: Timber Hardwood Sawn & Milled products.

**Fire:** Residential; up to BAL19 application / Commercial; as per NCC Vol.1 C1.5

**Application:** Residential (Class 1 & 10); NCC Vol.2, Part 3.5.3 & Commercial; NCC Vol.1, C1.10.

## INSTALL AND MAINTENANCE

- Preferred fixing is by cladding screws, such as 4.0 x 45.0 mm or equivalent.
- Lengths can be joined by fixing ends over a batten or stud. (End-matching is currently not available.)
- Porta recommends specifying a factory pre-coat on all surfaces and end-seal treatment to any cuts.
- A maintenance schedule is recommended to preserve the appearance and dimensional stability of the timber.
- To maintain the timber colour choose a pigmented coating or to allow the timber to weather to grey, choose an unpigmented coating.

## HOW TO SPECIFY

Product - Profile - Length - Species - Code - Certification - Coating

**For more information, see the full design and install guide on the Porta website.**



1300 650 787 sales@porta.com.au porta.com.au





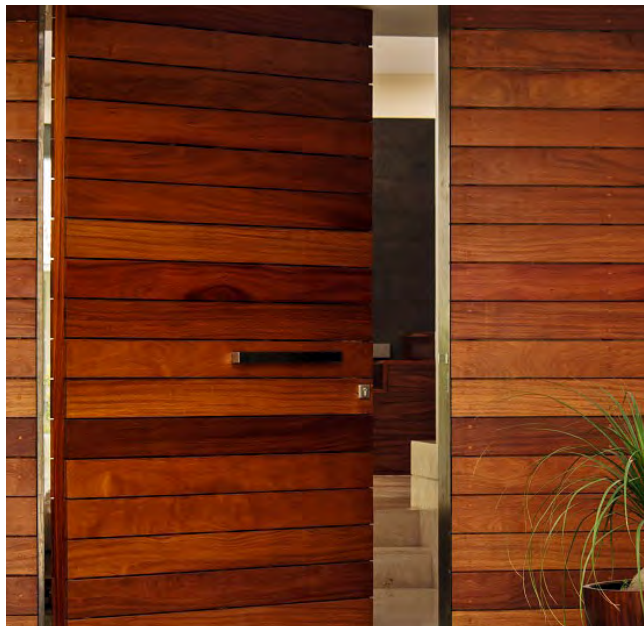
**1300 650 787**

[sales@porta.com.au](mailto:sales@porta.com.au)

[porta.com.au](http://porta.com.au)



Image Coz Constructions



Published: June 2019.  
See current range online. Porta reserves the right to alter specifications and delete products without notice. Some project images are representations only due to species or profile availability at time of print.

1300 650 787  
P: +61 3 9488 3222

[sales@porta.com.au](mailto:sales@porta.com.au)  
[porta.com.au](http://porta.com.au)

224-256 Heidelberg Road Fairfield VIC 3078  
P.O. Box 195 Fairfield, Victoria 3078  
© Porta Mouldings Pty Ltd  
ABN: 60 005 562 283

people who know & love **timber**