

porta

MOULDING
INNOVATIONS



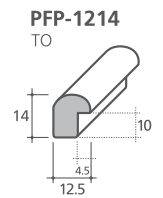
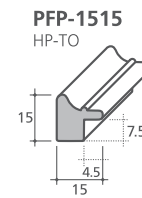
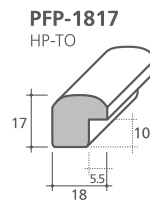
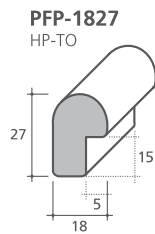
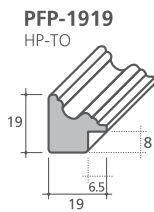
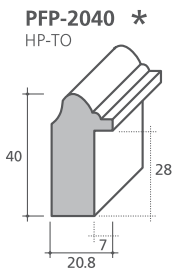
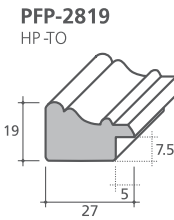
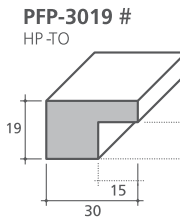
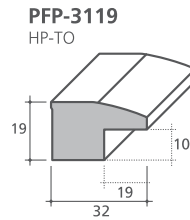
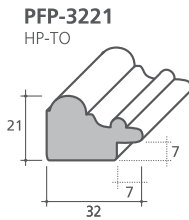
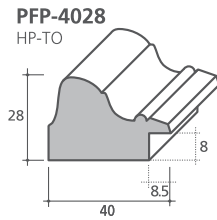
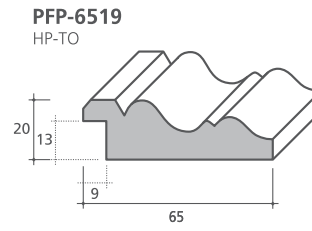
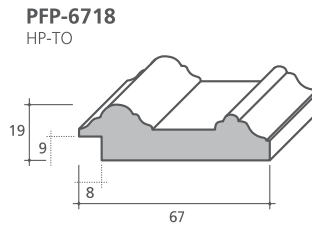
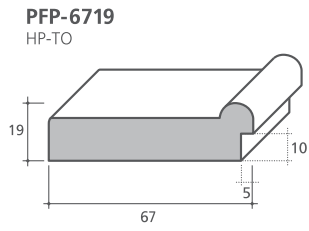
Picture Framing

- ▣ A handy guide to making your own picture frames



TIMBER INNOVATIONS

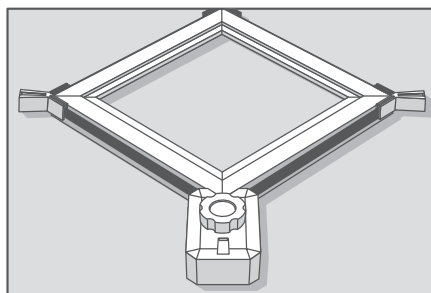
Picture Framing Profiles



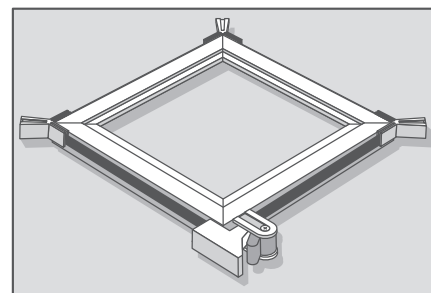
New Range

* 28 mm rebate for tapestry needle work paper tole
12mm cork or Caneite pinboard profile

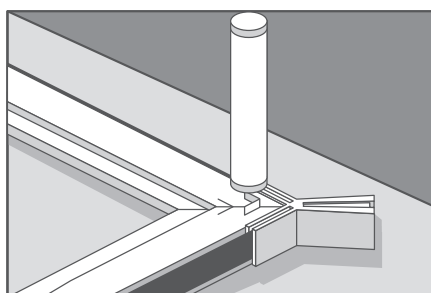
Accessories



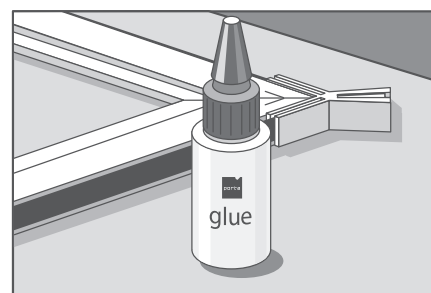
PFMCLAMP4M



PFMCLAMP2M



PFMPUNCHKIT/PFMVNAILS



PFMGLUE60ml

Before you begin:-

☑ **Tools** : Mitre Box, saw, Clamp, Glue, Picture Frame Punch & V nails, Rubber Mallet:

☑ **How much moulding do I need?** : For a quick approximation:

- (1) Add the picture's length & width
- (2) Multiply the total by two & add 12mm for an easy fit
- (3) To allow for mitred ends, multiply the overall width of the moulding by eight and add to the previous total

☑ **Measuring** :

- (4) L = frame length (maximum length of each side)
S = longer side picture (or article)
W = width of frame profile excluding rebate
P = 'play' or clearance around the article being framed, say 1.5mm

First, determine the length of the longer "leg" of the frame-

$$L = S + (2 \times P) + (2 \times W)$$

Then, determine the length of the shorter "leg" of the frame-

$$L = H + (2 \times P) + (2 \times W)$$

☑ **Method** :

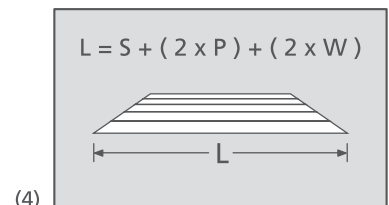
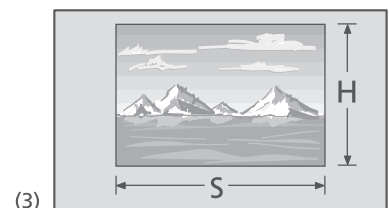
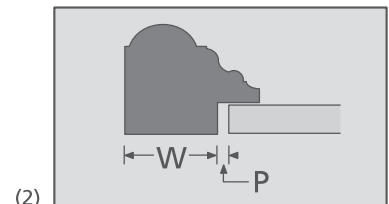
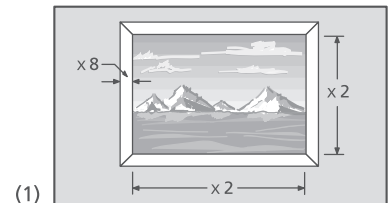
Cutting the framing "legs"

IMPORTANT : Before you cut, measure & check your dimensions carefully

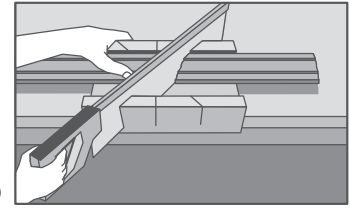
- (5) Place the moulding, face up, in the mitre box, with the rebate facing you and cut your first 45 deg. Mitre with a slow, easy sawing motion

Now, mark the determined "L" measurement on the piece, reverse the saw in the mitre box and make the second mitre cut.

With the first "leg" now cut, pick up the pairing piece and cut the initial mitre.

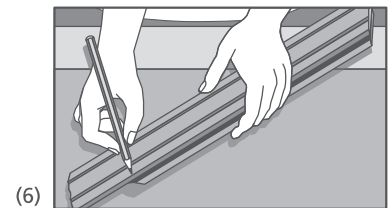


(6) By placing the two paired lengths "back-to-back" you can accurately mark the position for the cutting of the second mitre (see diagram).



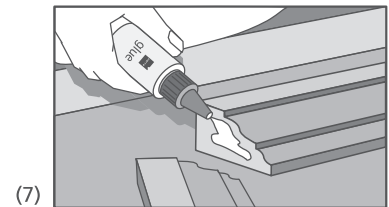
Repeat this process for the remaining two pieces of framing

Note : It is best to start cutting the longer leg lengths first. If you make a mistake with a piece, you can cut it down to the shorter leg size and minimize waste.



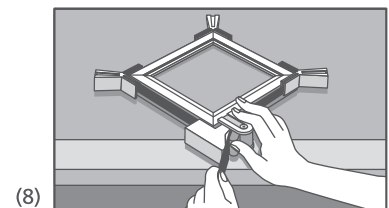
☑ Bonding :

(7) Apply a full even coating to the two faces of the mitre-cut and then clamp firmly together



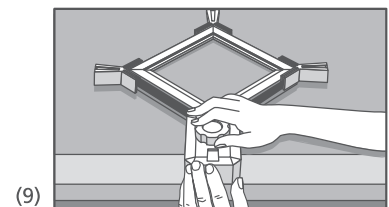
☑ Clamping :

Porta's picture frame clamps are easy to use. Once the cord is pulled tight, the frame is automatically aligned – providing of course, that the mitre cuts are accurate.



Having applied glue to the mitred faces, form up the frame carefully, locating the four corner blocks.

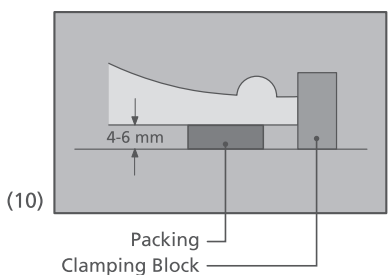
(8) If using the Porta 2m cord clamp kit, apply pressure to the joints by gently pulling the cord (see diagram). Once the frame is adequately clamped, secure the taut cord within the self-locking block.



(9) If using the Porta 4m clamp kit, simply depress the knob and then turn it until the frame is adequately clamped.

At this point, check each joint's alignment is accurate & wipe away any excess glue before leaving to dry for at least 60 minutes.

Note: Porta's picture frame clamps have additional corner blocks which allow for the clamping of 5, 6 and 8 sided regular frames.

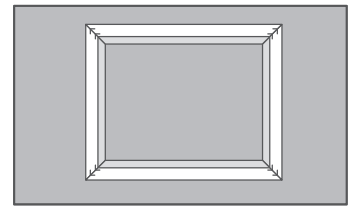
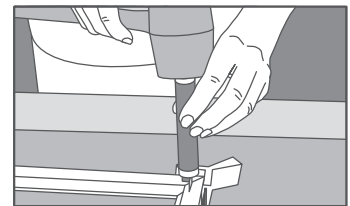
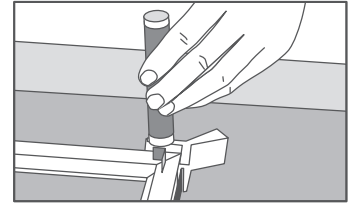
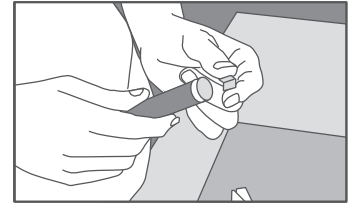


(10) Hint : It is recommended that novice framers use "deeper-edged" profiles for their first framing attempt. The "shallow-edged" profiles, namely, PFP-6519 and PFP-6718, need to be elevated by 4-6mm when clamping (see diagram). Simply centralize the frame legs within the plastic clamping blocks using appropriate packing material e.g. off-cuts of mat board.

▣ V-nailing

This method secures the joints & is especially recommended for bigger and/or heavier frames. Apply the V nails after the glue has set, and whilst the frame is still adequately clamped.

- Place a single V nail on the magnet which is positioned at the one end of the picture frame punch with the red edge (sharp edge) of the V nail facing down (see diagram).
- Align the V nail correctly above the join about 3-5mm from the inside corner, with the punch held vertically.
- Hammer the V nail home with a rubber mallet.
- Locate a second V nail on the join about 5mm away from the first, and repeat the process.
- Repeat this process for each join in turn. Your frame should now be secure



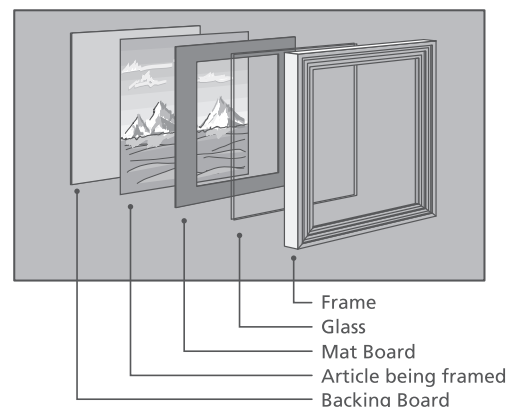
▣ Finishing :

There are 2 main paths to follow in finishing your raw timber frame:-

- Firstly, you may choose to feature the timber character by simply sealing with a clear finish - for example a varnish, a plastic coating, a wax, or a Scandinavian oil treatment – or by modifying the toning through a choice of stain
- Secondly, you may choose a decorative approach, and look to paint, stipple, rag, sponge or marble the frame

▣ Securing the Elements :

Assemble, (see attached diagram), ensuring glass is clean and dust free on both sides. Once the backboard is in place, put frame in clamp again and gently tap brad nails into the frame side to keep all neat and intact.



☑ Sealing & making ready to hang :

- To guard against dust and insects, apply a good quality backing tape around the edge of the moulding covering the brad nails.
- A wide array of hardware fastenings is offered. Consult your hardware store for the most appropriate fitting for your specific frame.
- The hanging fittings are generally secured about one-third of the way down from the top of the frame.
- Insert picture hanging wire or cord through the fittings and adjust the length so that, when hung, the centre point is around 40/50mm from the top of the frame

Enjoy your creation!

Other brochures in the Porta range include

- | | |
|----------------------|-------------------------|
| ☑ Timber Innovations | ☑ Create with Mouldings |
| ☑ Pine Innovations | ☑ Mitreless Corners |
| ☑ Clear Pine | ☑ Treated Mouldings |
| ☑ Hardwood | |

Contact Head Office

- ☑ 224 - 256 Heidelberg Road
Fairfield Victoria 3078
- ☑ P.O. Box 195
Fairfield Victoria 3078
- ☑ Telephone 03 9488 3222
Facsimile 03 9489 2459
- ☑ info@porta.com.au
sales@porta.com.au



☑ Available from