



Porta Room Divider

Skill Level: Easy



WHAT YOU WILL NEED:

HARDWARE

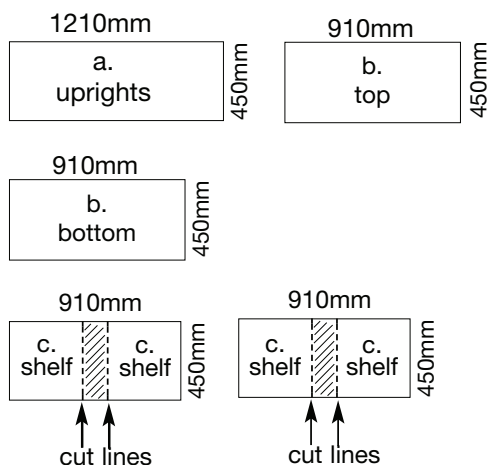
- 24 screws, 57mm long with flat allen head or similar screw (10/12 guage)
- 24 shelf pins (depending on quality of shelves used)
- 4 castors (approx 80mm diameter, 2 with brakes)

TOOLS

- Drill
- Allen Key
- Square
- Saw - preferably circular, see step 4
- Sanding block or plane
- Paint/Varnish to suit, fine sandpaper

TIMBER

- 3 x Porta Panels 450 x 19 x 1210mm. 2 for the sides and one for centre upright.
- 4 x Porta Panels 450 x 19 x 910mm. 1 for the top, 1 for for the bottom and 2 which are cut to make 4 shelves.



STEP 1:

Accurately mark screw holes of top and bottom, B's as illustrated, a minimum of 3 per width, and +/- 30mm in from each edge. Drill a clearance hole for the body of the screw to pass through. Make a cardboard template to improve accuracy.



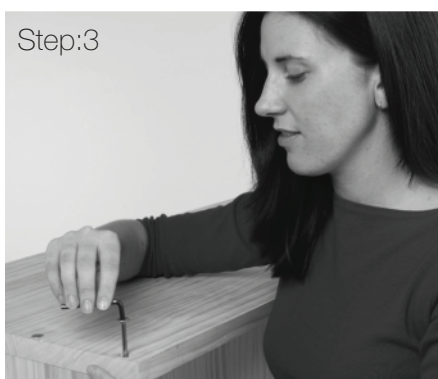
Step:1

STEP 2:

Then mark pilot holes in the uprights, A to match the clearance holes of B. This is a smaller hole. Be careful to mark the holes for the centre upright carefully, dead centre along top and bottom B. Drill

STEP 3:

Now screw top and bottom, B's, to sides and centre, A's.



Step:3

STEP 4:

To check the widths required for the shelves, measure between the uprights, A. Cut to size, then sand smooth. (Hint: For convenience use a circular saw or make use of cutting facilities at your local hardware store.) Mark desired positions and affix with bracket pins.

STEP 5:

Dismantle, and finish to suit according to paint manufacturers instructions. When dry, re-assemble.

STEP 6:

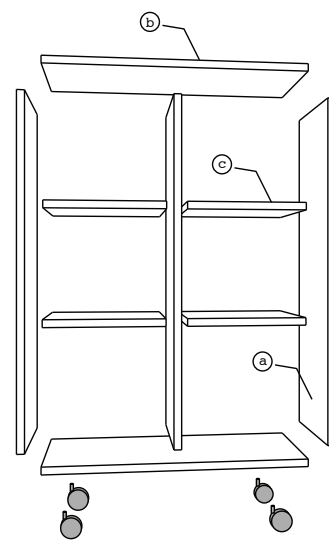
To check that the frame is square, measure diagonally from corner to corner. Both readings should be the same. Should extra stability be required, metal or timber cross bracing can be affixed to the back.

STEP 7:

Add castors as per manufacturers instructions.

Optional Ideas

Shelving may be arranged differently to suit. Backing can be added to convert to mobile library.



Step:4