

Porta e-project No.4 Kitchen Trolley



Tools & hardware requirements

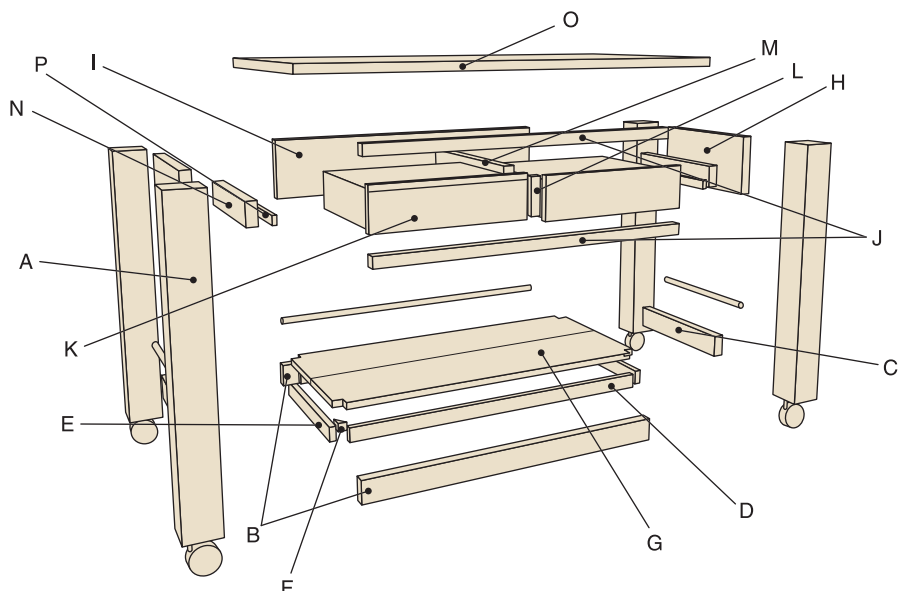
Bench e.g. Triton
Drill, drill bits, auger bit, dowelling jig
Sash cramps (long enough for side frame)
Sander

Extras

Castors, 80mm diameter with brake (4)
Drawer shells & metal drawer runner sets 400x450mm (2)
Drawer handles or knobs (2)
Chrome Rails/Dowels 900mm x 25mm (2)

Materials & cut list

Code	Description	Cut size in mm	Qty	Porta Code	Qty
a	Legs	90x90x776	4	DAR9090PICLO.9	4
b	Bottom side rails	65x90x880	2	DAR6530PICLO.9	2
c	Bottom end rails	65x30x380	2	DAR6530PICLO.9	1
d	Bottom inside support side rails	40x18x880	2	DAR4018PICLO.9	2
e	Bottom inside support end rails	40x18x380	2	DAR4018PICLO.9	1
f	Bottom shelf corner supports	50x30x100	4	Take from m	
g	Bottom shelf	220x19x940	2	DAR45019PICL1.21	1
h	Top rail ends	180x30x380	2	DAR18030OPICL0.9	1
i	Top rail back	180x30x880	1	DAR18030PICLO.9	1
j	Top front rails housing drawers	65x30x880	2	DAR6530PICLO.9	2
k	Drawer fronts	120x18x420	2	DAR13518PICLO.9	1
l	Drawer front divider	65x30x120	1	Take from c	
m	Drawer centre divider	180x30x410	1	DAR18030PICLO.9	1
n	Support rail	65x30x410	2	DAR6530PICLO.9	1
o	Table top	600x26x1200	1	DAR60026PICL1.21	1
p	Drawer runner support rail	30x12x410	2	DAR3012PICLO.9	1



Porta e-project No.4 Kitchen Trolley



Construction sequence

Before you begin, please read instructions in their entirety. Check component sizes and make any alterations deemed necessary. This project is rated as "advanced". Should you need help it is recommended you consult a qualified carpenter.

Step 1: Cut to finished length or have cut by others all the components that form part of the outside of the carcass, from the cutting list provided. Leave all the other components until the carcass is constructed i.e., drawer fronts, support rails, shelf etc.

Step 2: Mark out and drill the required holes for all the joints between rails & legs i.e. dowel joints (See plan view (i)). Also drill the holes for the dowel or chrome rail. Sand if needed any faces difficult to access after glue up.

Step 3: Assemble the two end frames first (components a, h, c & dowels/chrome rails). You will need to clamp the components together (e.g. sash or band cramps). Wipe off any excess glue.

Step 4: Assemble the front and back rails, top & bottom, (components reference b, i, j) between the end frames, (longer cramps will be needed). Make sure that frame is square by measuring diagonally across the frame (top and from side).

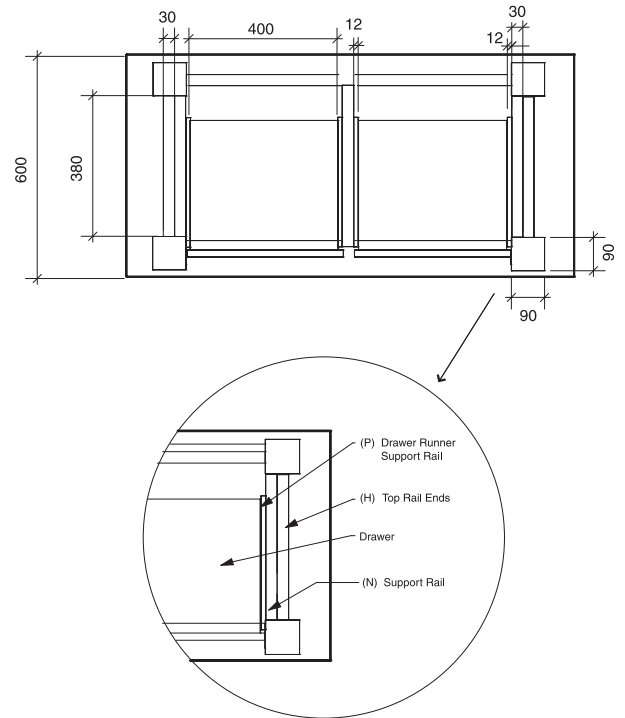
Step 5: When dry, cut and fit all the other components, i.e. support rails (n), drawer divider (m). The drawer front (k) can also be cut to size and sanded, allowing 2mm or more clearance from the opening size.

Step 6: Assemble the drawer shells and fit into openings with mechanical extension drawer runners. Position the drawer to allow for the drawer front to be attached and mark and screw the mechanical extension drawer runners to the rails and then to the drawer sides. The drawer front should be sealed on both sides before attaching. Use cardboard spacers to float the drawer on all sides and give you some edge clearance. Double-sided tape is useful to temporarily attach the drawer front. Once correctly positioned screw from inside the drawer.

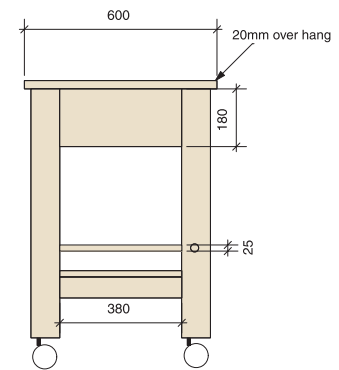
Step 7: The bottom shelf can be cut to fit. If it is to be a solid panel, in order to fit into the frame and between the legs, it must first be cut into 2 pieces (g), long ways and then have the corners cut out.

Step 8: Finish sand all the surfaces that show and then seal to suit (the top shelf should be sealed on both sides to prevent warping). The top is attached using your preferred fixings, the bottom shelf screwed from underneath if necessary, castors are screwed to the bottom of the legs and then selected handles screwed to the drawer fronts.

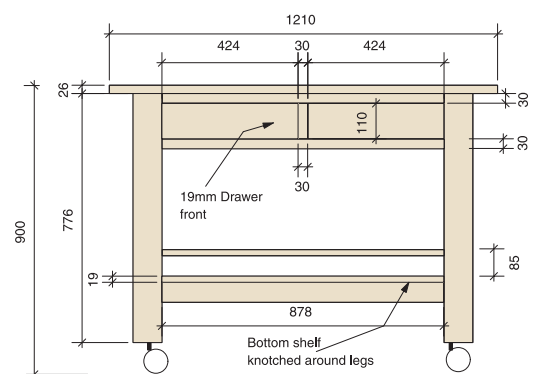
(i)



(ii)



(iii)



These project instructions are a recommendation only. If further detail is required, Porta recommends contacting a qualified tradesperson. Whilst every effort has been made to ensure the accuracy of the information provided, Porta assumes no responsibility for errors or omissions or any consequence of reliance on this information. Porta recommends that appropriate safety wear be used at all times when working with wood.



Please email (wendydriscoll@porta.com.au) or fax (03-9486-3133) in your project ideas

If we print them in the Porta e-post, you will receive a A\$100 gift voucher at a hardware store of your choice!